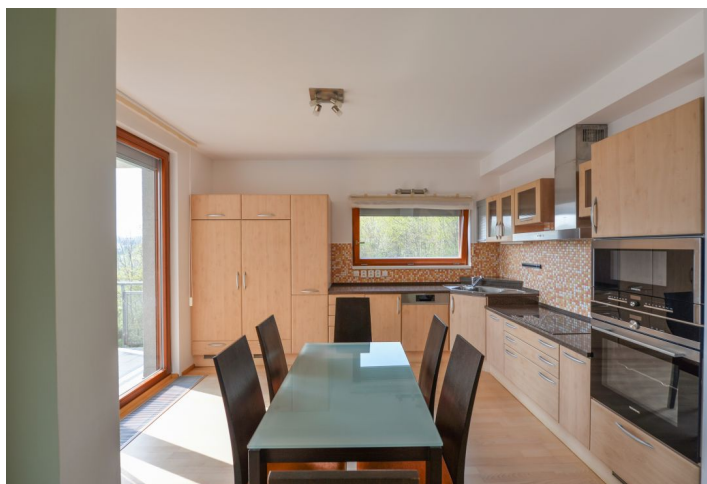




## Apartment Three-bedroom (4+kk)

Rented

108 m<sup>2</sup>, Praha 5, Radlice, Klímova





## Apartment Three-bedroom (4+kk)

Rented

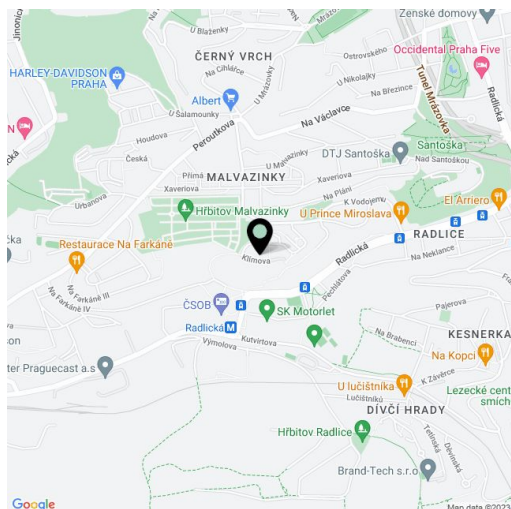
108 m<sup>2</sup>, Praha 5, Radlice, Klímova

Total area	117 m <sup>2</sup>
Floor area*	108 m <sup>2</sup>
Balcony	9 m <sup>2</sup>
Parking	Two garage parking spaces.
Garage	Yes
Cellar	Yes
PENB	C
Reference number	32188
Available from	Immediately

This modern, semi furnished 3-bedroom 2-bathroom apartment with 2 balconies providing nice green views is on the lower ground / second floor of the Panorama Residence gated project with 24/7 security and parking. Located in a quiet Prague 5 area within quick reach of international schools (French, German and English), shopping and sports facilities (gym, swimming pool, tennis courts). Located just minutes from Radlická metro station, line B, with tram and bus connections, and convenient to Nový Smíchov / Anděl business and entertainment center.

The interior includes a living room with a dining area, a fully fitted open plan kitchen and balcony access, a master bedroom with built-in wardrobes and a shower room with a toilet, and two further bedrooms - one with access to the second balcony. There is a family bathroom including a bathtub, a separate toilet, a storage room, and an entrance hall with built-in wardrobes.

**Wooden floors**, tiles, security entry door, built-in storage, French windows, external blinds, central heating, washer, dryer, dishwasher, microwave oven, TV, video entry phone, alarm, **cellar**, lift, chip entry to the building. **Two garage parking spaces** are available (included). Deposit for service charges, water and heating: approx. CZK 4400/month. Electricity is billed separately.



\* Area of the unit according to the Civil Code. The area consists of the sum total area of the entire unit bounded by perimeter walls.



# Apartment Three-bedroom (4+kk)

Rented

108 m<sup>2</sup>, Praha 5, Radlice, Klímova

