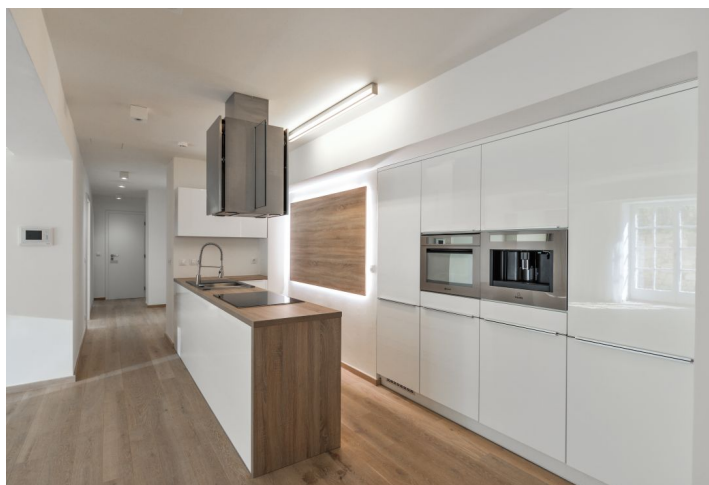




## Apartment Three-bedroom (4+kk)

Rented

135 m<sup>2</sup>, Prague 6, Bubeneč, Štursova





## Apartment Three-bedroom (4+kk)

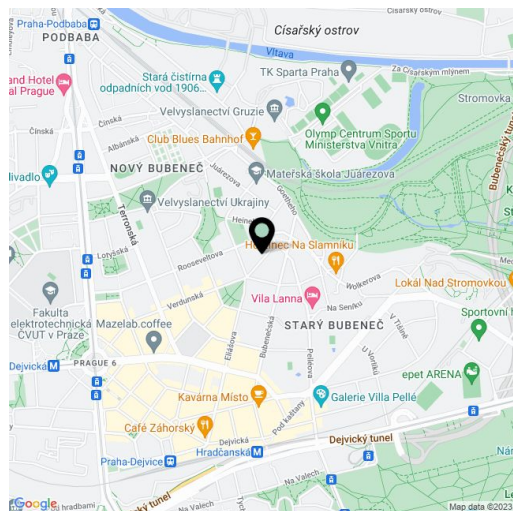
**Rented**135 m<sup>2</sup>, Prague 6, Bubeneč, Štursova

Total area	175 m <sup>2</sup>
Floor area*	135 m <sup>2</sup>
Terrace	40 m <sup>2</sup>
Parking	Parking on the plot.
Cellar	Yes
PENB	E
Reference number	32285
Available from	Immediately

Benefiting from a terrace, parking and access to a shared garden, this is a fully refurbished 3-bedroom 2-bathroom apartment on the lower ground floor of a renovated residential building. Located in a quiet street in the prestigious Bubeneč neighborhood with numerous foreign embassies and lots of greenery, just a few min. walk from the Stromovka Park. Highly sought after area within walking distance of the Hradčanská and Dejvická metro stations with full amenities in the vicinity and very quick connection to the city center, conveniently located for access to the airport and international schools.

The interior features a living room with a dining area and a fully integrated kitchen, a master bedroom with an en-suite bathroom (walk-in shower, bidet, toilet), two further bedrooms, a family bathroom (bathtub, toilet), a hall with utility area, and an entrance hall. The **terrace** can be accessed from the living room and two bedrooms.

Built-in wardrobes and storage in the master bedroom, hall and entrance hall, **hardwood floors**, tiles, underfloor heating throughout, security entry door, central heating, quality kitchen appliances, dishwasher, induction cooktop, coffee maker, video entry phone, alarm, **cellar (4m<sup>2</sup>)**. One **parking** space on the plot is included. Deposit for common building charges and heating CZK 6.500. Electricity is paid separately.



\* Area of the unit according to the Civil Code. The area consists of the sum total area of the entire unit bounded by perimeter walls.