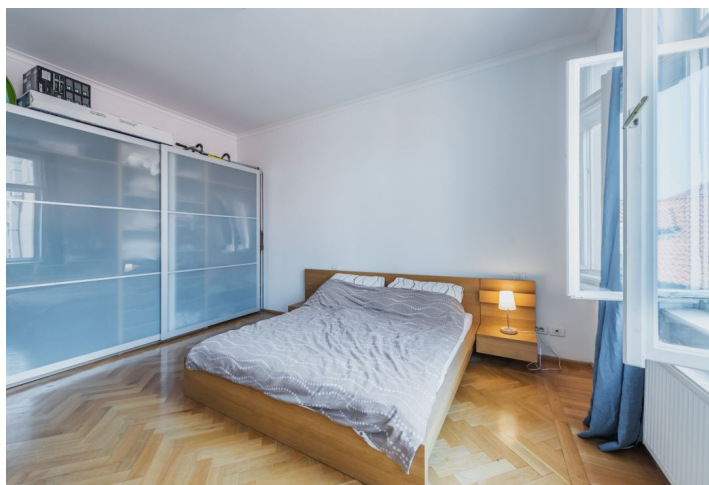
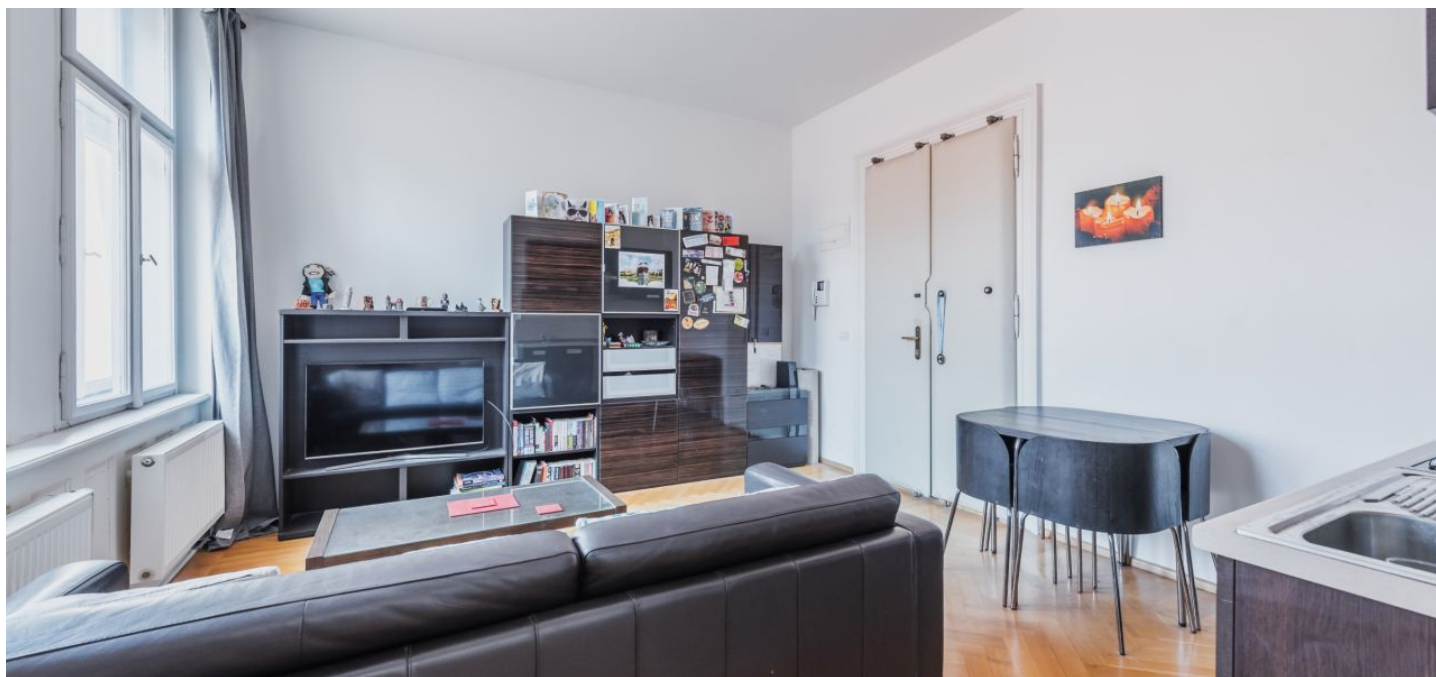




## Apartment One-bedroom (2+kk)

Rented

45 m<sup>2</sup>, Prague 1, Nové Město, Řeznická





## Apartment One-bedroom (2+kk)

Rented

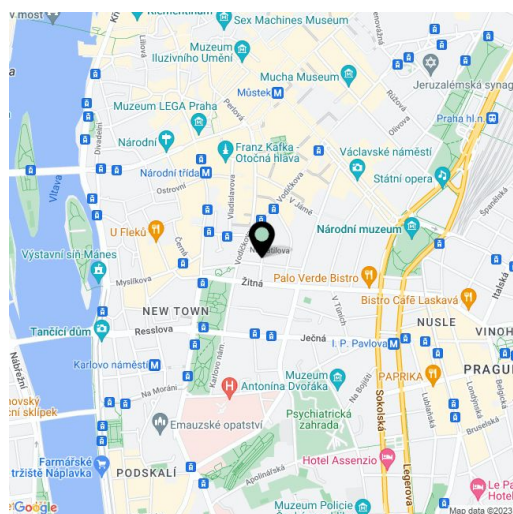
45 m<sup>2</sup>, Prague 1, Nové Město, Řeznická

Total area	45 m <sup>2</sup>
Parking	-
Cellar	-
PENB	G
Reference number	32724
Available from	Immediately

Fully furnished 1-bedroom apartment on the 3rd floor of a fully refurbished traditional building with an elevator. Centrally located in close vicinity of Karlovo náměstí Square, with tram and metro connections, and within walking distance of Wenceslas Square.

The interior features a living room with a fully fitted open plan kitchen, a bedroom, and a bathroom with a walk-in shower, toilet, and bidet.

Wooden and tile floors, storage space, large windows. Common building charges and deposit for utilities CZK 2,500 per month.



\* Area of the unit according to the Civil Code. The area consists of the sum total area of the entire unit bounded by perimeter walls.