



## Apartment One-bedroom (2+kk)

Ask for price

57 m<sup>2</sup>, Prague 3, Vinohrady, Slavíkova





## Apartment One-bedroom (2+kk)

Ask for price

57 m<sup>2</sup>, Prague 3, Vinohrady, Slavíkova

Total area	57 m <sup>2</sup>
Parking	-
Cellar	Yes
PENB	G
Reference number	33419

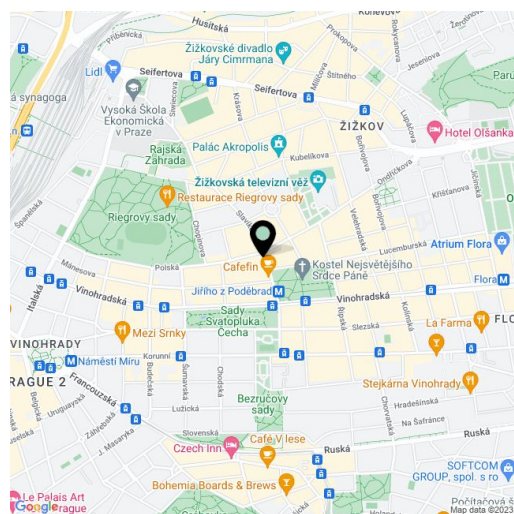
This apartment is located on the 5th floor of a boutique residential project—the reconstruction of a 19th-century apartment building in an attractive residential area of Vinohrady just a few steps from Riegrovy Sady Park, Jiřího z Poděbrad Square, or the Žižkov TV Tower. Completion is scheduled for Q4 2019.

The layout will offer a living room with a dining area, an open plan kitchen, a bedroom, a bathroom, a toilet, an entrance hall, and a closet.

The apartment is offered in a completely finished state with the option of white walls finishing (i.e. before the completion of the final surfaces, floors, tiles). Facilities include oak floors, large-format tiles, high quality sanitary ware, cassette interior doors and replicas of casement windows, double-wing entrance doors with period mouldings, data distribution, a home phone, and a preparation for a satellite TV. Heating will be provided by a central boiler room in the basement. The purchase price includes a cellar.

The sought-after location provides all civic amenities and easy access to the center thanks to the close proximity of a tram stop and the Jiřího z Poděbrad metro station (line A). Within walking distance, there are both kindergartens and elementary schools, high schools, shops, cafes, and restaurants, the Akropolis Palace, Mahlerovy Sady Garden with the Žižkov TV Tower, and the Sokol Královské Vinohrady swimming pool in Riegrovy Sady Park.

Floor area 57.4 m<sup>2</sup>, cellar.



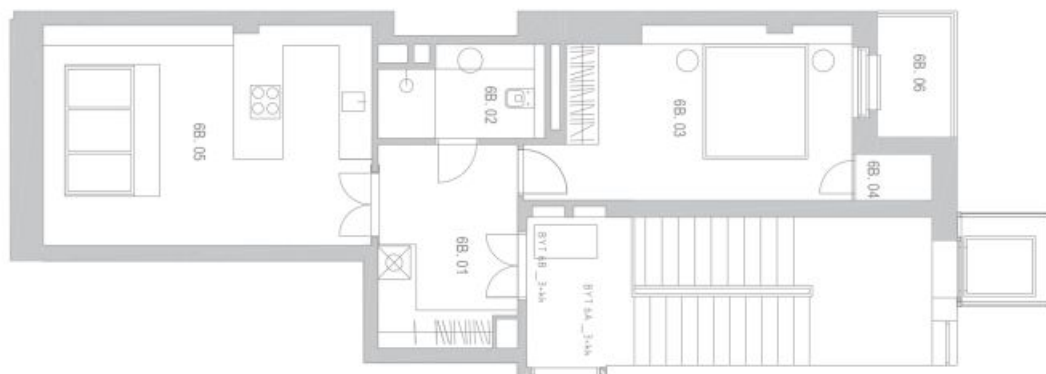
\* Area of the unit according to the Civil Code. The area consists of the sum total area of the entire unit bounded by perimeter walls.



# Apartment One-bedroom (2+kk)

57 m<sup>2</sup>, Prague 3, Vinohrady, Slavíkova

Ask for price



TABULKA MĚŘENÍ		Plocha m <sup>2</sup>	
Č. M.	MĚŘENÍ		
6B.01	HALA	4.10	
6B.02	KUCHYŇKA	4.78	
6B.03	LOŽNICE	17.38	
6B.04	KUPELNA	7.19	
6B.05	OSTRŮVÍ (PŘÍKUP) S KUCHYŇKOU A ŽIVOU	21.36	
<b>CELKEM</b>		<b>54.61</b>	
PLOCHA PŘÍKUPU S KUCHYŇKOU A ŽIVOU		<b>21.36</b>	
6B.06	SKLAD		2.00