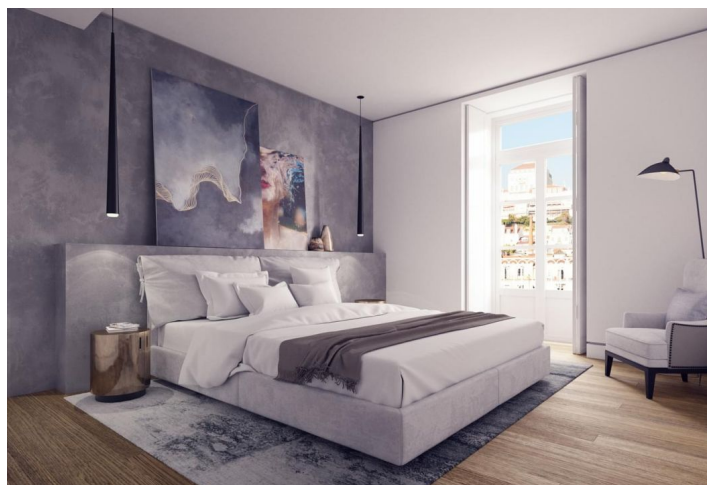
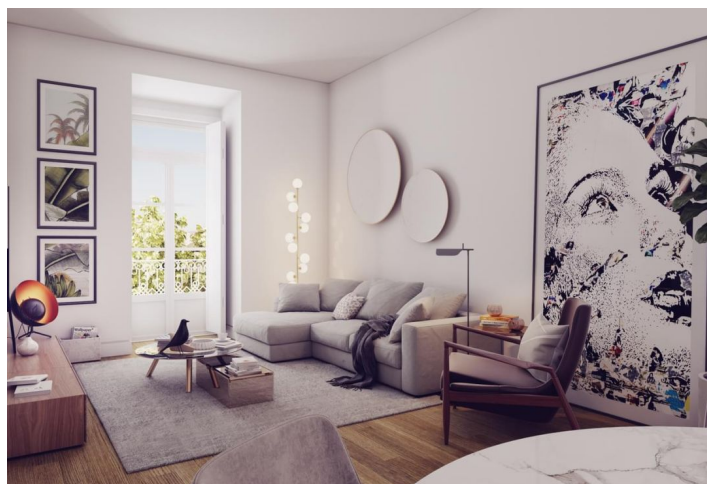
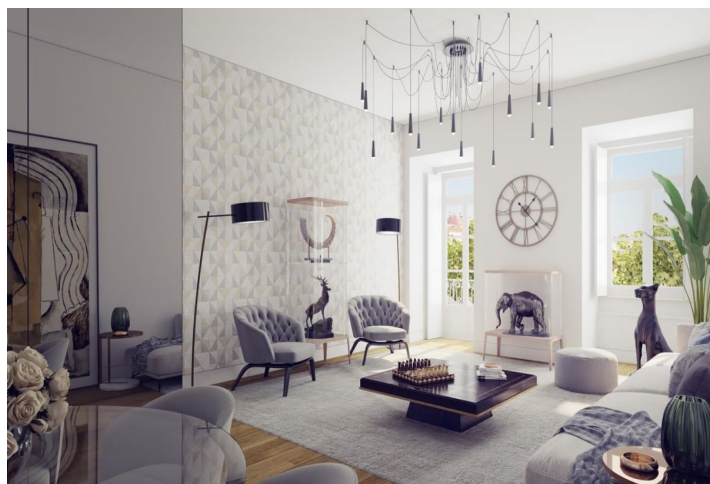




## Apartment One-bedroom (2+kk)

Ask for price

68 m<sup>2</sup>, Lisboa, Área Metropolitana de Lisboa





## Apartment One-bedroom (2+kk)

[Ask for price](#)

68 m<sup>2</sup>, Lisboa, Área Metropolitana de Lisboa

Total area	68 m <sup>2</sup>
Parking	-
Cellar	-
PENB	G
Reference number	33424

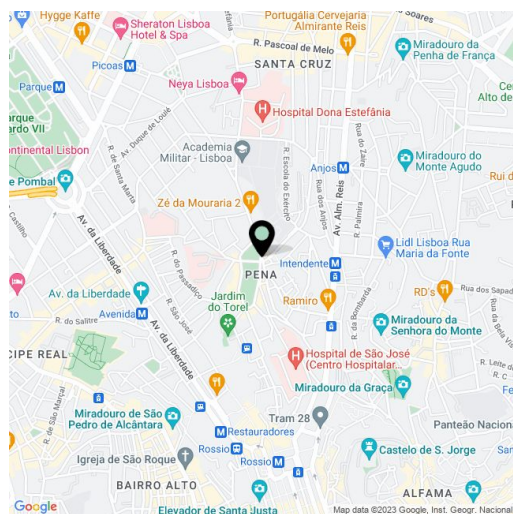
This air-conditioned apartment currently under development is part of the **Ribeira Garden project**, a recently renovated 19th century apartment building overlooking the Tagus River and a nearby park.

The corner building has one of Lisbon's most sought-after addresses and is close to historic Riberia Square with its **traditional market**.

The apartment is divided into a living room with a dining area and a kitchen, a bedroom, a bathroom (with a shower and tub), and a hallway. The planned completion is in 2020.

The neighborhood on the banks of the river offers quick access to the airport, many monuments and landmarks, and a wide range of restaurants and shops. A train station, metro and tram stop, and ferry dock are all close-by.

Interior: 68 sq. m.



\* Area of the unit according to the Civil Code. The area consists of the sum total area of the entire unit bounded by perimeter walls.