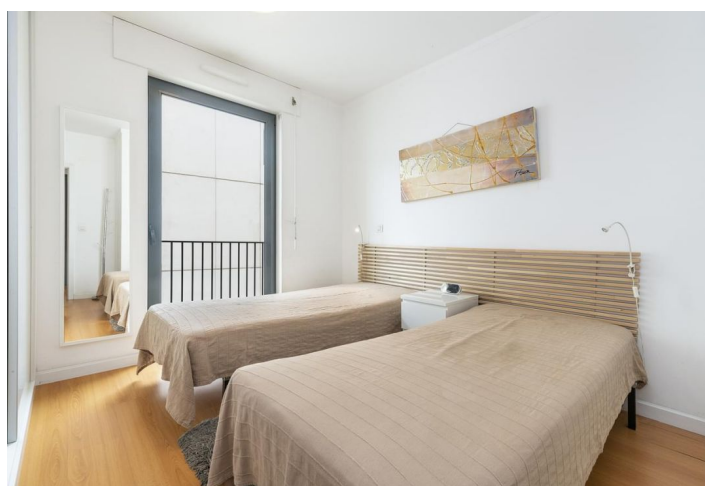




## Apartment Two-bedroom (3+kk)

€ 430 000 | CZK 10 788 700

79 m², Lisboa, Área Metropolitana de Lisboa





# Apartment Two-bedroom (3+kk)

€ 430 000 | CZK 10 788 700

79 m², Lisboa, Área Metropolitana de Lisboa

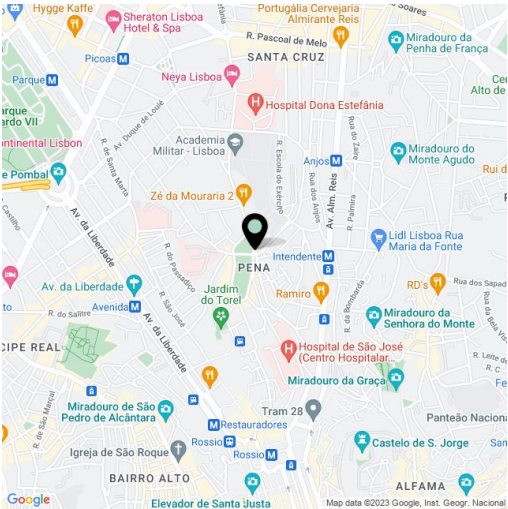
Total area	79 m²
Parking	Yes
Cellar	-
PENB	G
Reference number	33428

This apartment with a garage parking space and views of an impressive Moorish castle is in a modern building located in the revitalized Martim Moniz neighborhood in the very heart of Lisbon. From here, getting to the airport, going shopping, or taking romantic walks along the city's side streets is easy to do.

The interior is illuminated by the sunlight streaming through large French windows and consists of 2 bedrooms, a living room with a fully-equipped kitchen, a bathroom (with a bathtub, sink, toilet, and bidet), and a closet. The unit comes with a parking space in an underground garage that residents can comfortably reach by elevator.

Nearby, there is a marina, a metro and train station station, and the iconic historic no. 28 tram line passes through the neighborhood. The dominant and accessible landmark is the Castelo De Sao Jorge (St. George's Castle) with breathtaking panoramic views of the city.

Interior: 79 sq. m.



\* Area of the unit according to the Civil Code. The area consists of the sum total area of the entire unit bounded by perimeter walls.