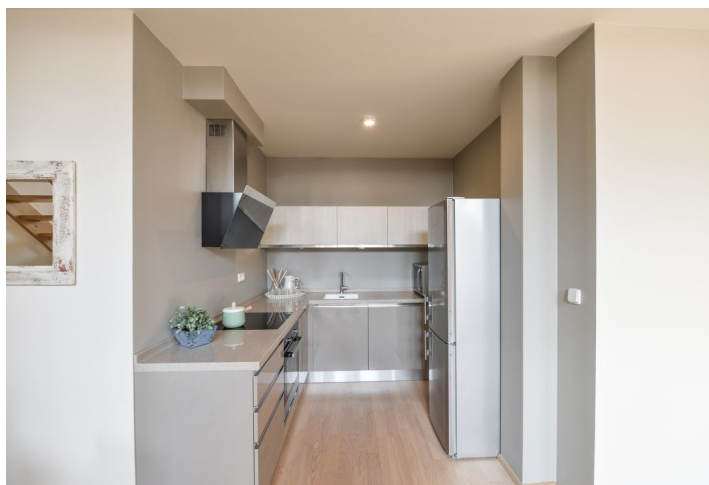




Apartment Three-bedroom (4+kk)

Rented

116 m², Praha 5, Smíchov, Štefánikova





Apartment Three-bedroom (4+kk)

Rented

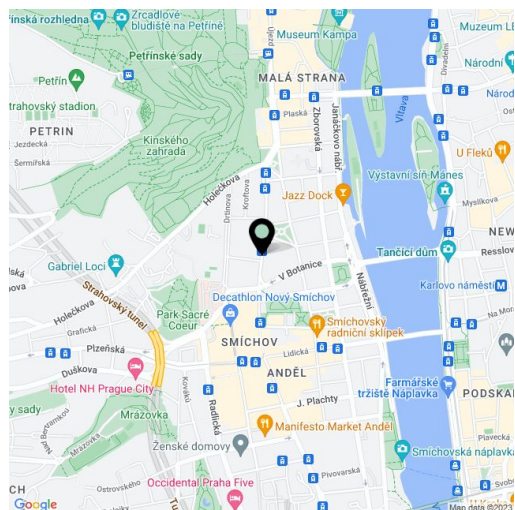
116 m², Praha 5, Smíchov, Štefánikova

Total area	116 m ²
Parking	Garage parking nearby can be arranged.
Garage	Yes
Cellar	Yes
PENB	C
Reference number	33524
Available from	Immediately

This is a semi furnished 3-bedroom 2-bathroom split-level attic apartment on the fourth top floor of a renovated residential building with a lift and preserved original details, in Smíchov, Prague 5. Located within walking distance of the Kinských Garden, Petřín Hill Park, the Vltava embankment and the French School. Area with full amenities within easy reach and very quick access to the city center, moments from the Anděl metro station and the Nový Smíchov shopping and entertainment zone.

The lower level features a living room with a fully fitted open plan kitchen, a bedroom with a built-in wardrobe, a toilet, utility area, and an entrance hall with built-in storage. There is a mezzanine level featuring a **tea / reading corner** with beautiful views of Prague. The upper floor offers a master bedroom with built-in wardrobes and an en-suite bathroom (walk-in shower, toilet), a second bedroom, and a family bathroom (bathtub, toilet).

Wooden floors, security entry door, automatic external blinds, electric boiler, Miele washer and dryer, Liebherr fridge, induction cooktop, dishwasher, microwave oven. **Parking** can be arranged in the nearby Nový Smíchov shopping mall underground public garage at an additional cost. Service charges and water bills: CZK 460/person/month. Electricity is billed separately.



* Area of the unit according to the Civil Code. The area consists of the sum total area of the entire unit bounded by perimeter walls.