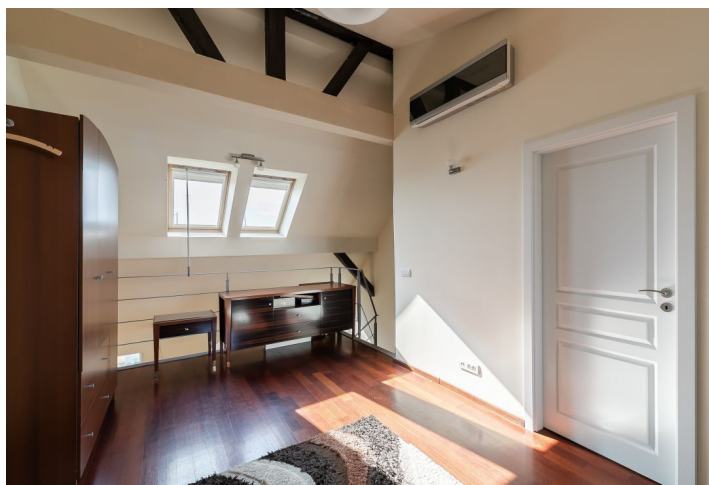
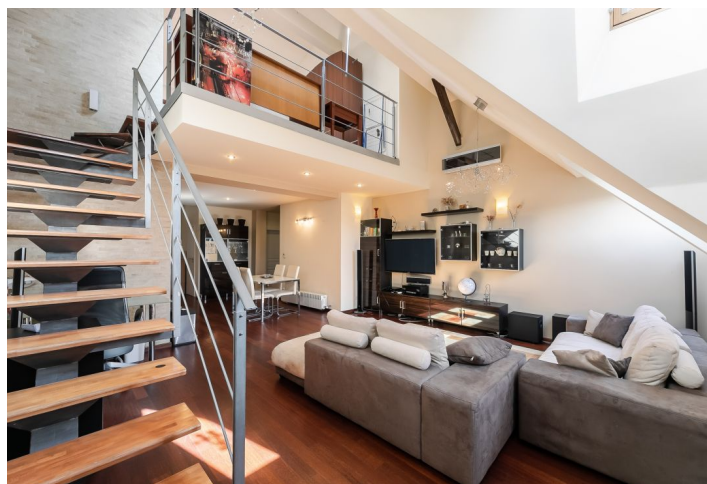




Apartment Two-bedroom (3+kk)

Sold

102 m², Prague 10, Vršovice, Slovinská





Apartment Two-bedroom (3+kk)

Sold102 m², Prague 10, Vršovice, Slovinská

Total area	120 m ²
Floor area*	102 m ²
Terrace	18 m ²
Parking	-
Cellar	-
PENB	G
Reference number	33525

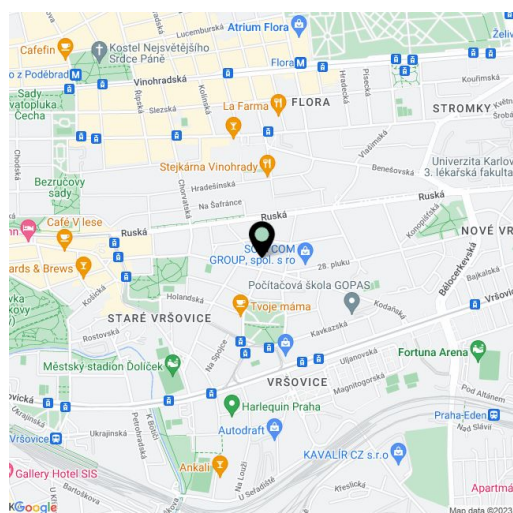
This air-conditioned maisonette apartment with a terrace is situated on the 5th floor of a Neo Gothic corner building located in an elegant part of Vršovice, in a place with easy transport connections and a full spectrum of services.

The entry level consists of a living room with a kitchen and dining area, a bedroom, a walk-in closet, and a bathroom. In the attic, there is a gallery that can be used as a second bedroom, a bathroom, a **winter garden**, and a **terrace** facing the courtyard with mature trees.

The windows are wooden (classic and skylights). Heating is by a Baxi gas boiler. The building has been renovated. It has nice common areas with a historic atmosphere and a new elevator (to the mezzanine).

The building is located on the corner of a tree-lined side street, one of the most beautiful streets of Vršovice: Kodaňská. In the vicinity, there are shops, restaurants, cafes, and schools. A few steps from the house there is a bus stop with links to the Náměstí Míru metro station (line A) and Florenc transfer station (lines B and C). There is also a tram stop within walking distance. The nearby landscaped Svatopluk Čech Square and **Heroldovy Gardens** offer plenty of greenery. The romantic **Grébovka Park** is also close-by.

Interior 101.69 m², terrace and winter garden 18.07 m².



* Area of the unit according to the Civil Code. The area consists of the sum total area of the entire unit bounded by perimeter walls.



Apartment Two-bedroom (3+kk)

102 m², Prague 10, Vršovice, Slovinská

Sold



Virivka
Zimní zahrada

BT 6/1 = 606 ÚP + 602 TP + 604 A + 607 A
701 (posl.) 16,66 parky stávková 138
702 (posl.) 4,47 parky stávková 138
703 (posl.) 18,07 parky stávková 138

BT 6/2 = 547 ÚP + 545 TP + 556 A + 549 A
704 (posl.) 17,00 parky stávková 138
705 (posl.) 18,49 parky stávková 138
706 (posl.) 4,47 parky stávková 138

BT 6/3 = 545 ÚP + 602 TP + 547 A + 549 A
708 (posl.) 6,14 parky stávková 138
709 (posl.) 13,00 parky stávková 138
710 (posl.) 12,42 parky stávková 138
711 (posl.) 8,27 parky stávková 138
712 (posl.) 12,23 parky stávková 138

BT 6/4 = 623 ÚP + 622 TP + 624 A + 624 A
713 (posl.) 1,83 parky stávková 138
714 (posl.) 17,10 parky stávková 138
715 (posl.) 12,42 parky stávková 138
716 (posl.) 4,42 parky stávková 138
717 (posl.) 2,96 parky stávková 138

Všechny rozměry jsou orientální, měřeno ověřit při realizaci!
 Příklad v popisu z vyobrazení sjezdové rampy z 1. podlaží do přízemí stávkové 138. K dispozici může být provizní sjezdové rampy.

- stávková 138
- stávková 138
- stávková 138
- stávková 138
- stávková 138
- stávková 138