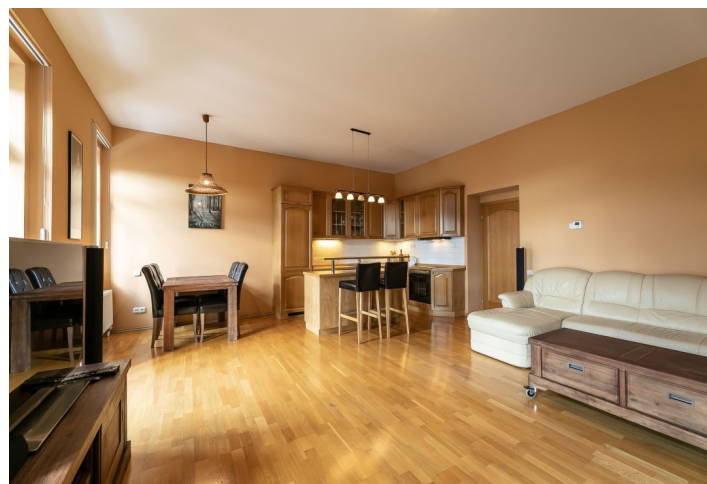




## Apartment One-bedroom (2+kk)

Rented

67 m<sup>2</sup>, Praha 10, Vršovice, Holandská





## Apartment One-bedroom (2+kk)

Rented

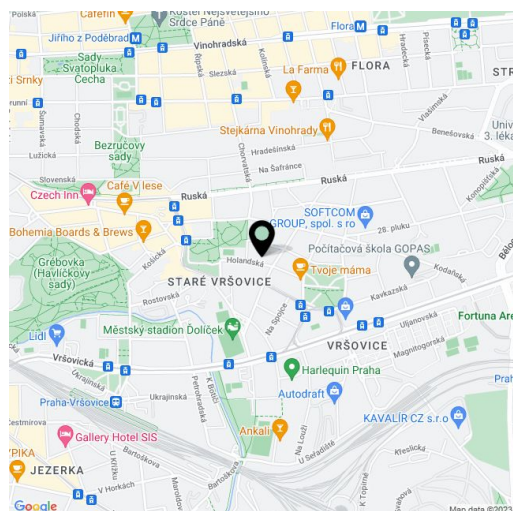
67 m<sup>2</sup>, Praha 10, Vršovice, Holandská

|                  |                   |
|------------------|-------------------|
| Total area       | 70 m <sup>2</sup> |
| Floor area*      | 67 m <sup>2</sup> |
| Balcony          | 3 m <sup>2</sup>  |
| Parking          | Garage parking.   |
| Garage           | Yes               |
| Cellar           | Yes               |
| PENB             | G                 |
| Reference number | 33666             |
| Available from   | Immediately       |

This is a furnished 1-bedroom apartment with a balcony, on the first floor of a renovated residential building with a lift and parking, on the Vinohrady and Vršovice neighborhood divide. Located on a quiet street right next to the fully renovated Vršovický zámeček (Vršovice Castle), in close vicinity of the Havlíčkovy sady park. Area with quick access to the city center (a few short tram stops to Náměstí Míru metro station), with full amenities available within easy reach.

The interior includes a living room with a fully fitted open plan kitchen, a breakfast bar and a French window providing nice views, a bedroom with a **balcony** facing the street, a bathroom including a bathtub and a toilet, and an entrance hall with built-in wardrobes and storage.

**Solid wood floor**, carpets, tiles, security entry door, security external blind on the balcony, blinds, new gas boiler, washer, dishwasher, basic kitchenware, garden furniture, TV, **cellar**, camera system in the building. One **garage parking** space is available at CZK 3500/month. Monthly deposit for service charges and utilities: approx. CZK 3000/month.



\* Area of the unit according to the Civil Code. The area consists of the sum total area of the entire unit bounded by perimeter walls.