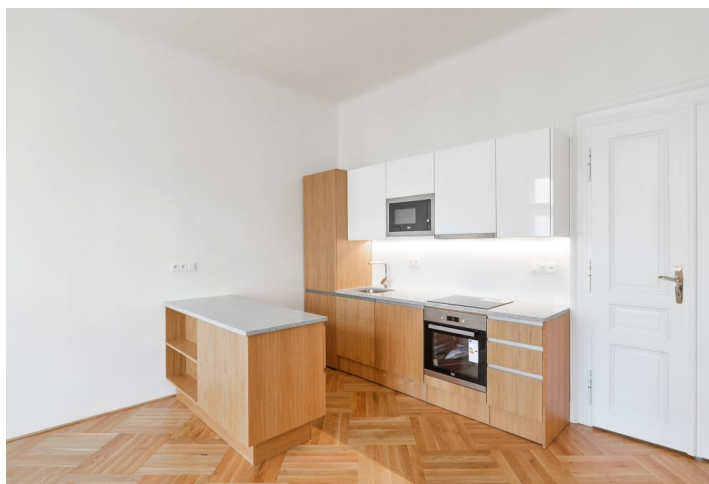




## Apartment Two-bedroom (3+kk)

Rented

74 m<sup>2</sup>, Prague 1, Josefov, Maiselova





## Apartment Two-bedroom (3+kk)

Rented

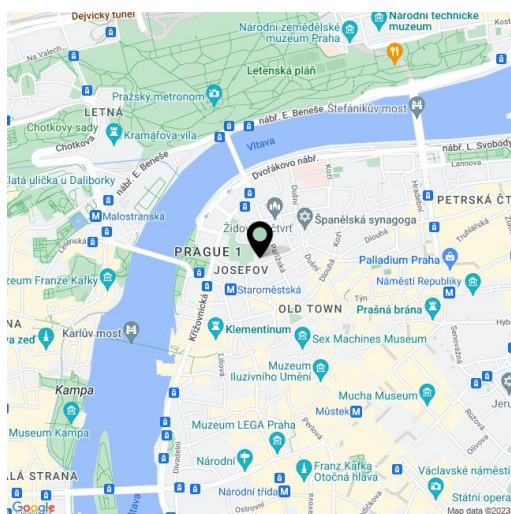
74 m<sup>2</sup>, Prague 1, Josefov, Maiselova

Total area	74 m <sup>2</sup>
Parking	-
Cellar	-
PENB	G
Reference number	33929
Available from	Immediately

Boasting a direct view of the Maisel Synagogue, this is a fully newly refurbished 2-bedroom apartment in an attractive location in the center of historic Prague. Situated on the third floor of a completely refurbished Art Nouveau building with a lift and camera system. Prestigious location neighboring the elegant Pařížská street, with the finest shopping, dining and entertainment opportunities, just moments from the Vltava embankment and the Old Town Square.

The apartment includes a living room with a fully integrated kitchen and views of the Maisel Synagogue, two separate bedrooms facing the quiet courtyard, a shower room with a toilet, and a spacious entrance hall.

Preserved original details, high ceilings, renovated **oak parquet floors**, **terazzo floors**, security entry door, central gas heating, underfloor heating in the bathroom, induction cooktop, dishwasher, microwave oven, video entry phone, data points, independent energy meters, chip entry to the building. Parking is available in the nearby InterContinental Hotel. Service charges and utilities: CZK 4000/month.



\* Area of the unit according to the Civil Code. The area consists of the sum total area of the entire unit bounded by perimeter walls.