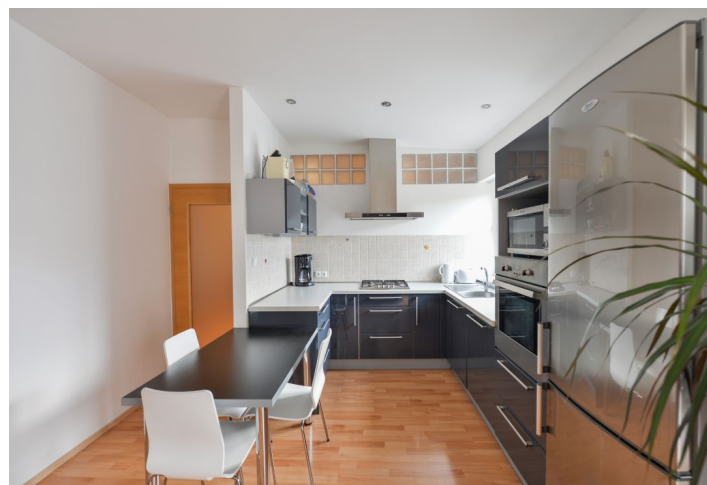




## Apartment Two-bedroom (3+kk)

Rented

80 m<sup>2</sup>, Prague 7, Holešovice, Letohradská





## Apartment Two-bedroom (3+kk)

Rented

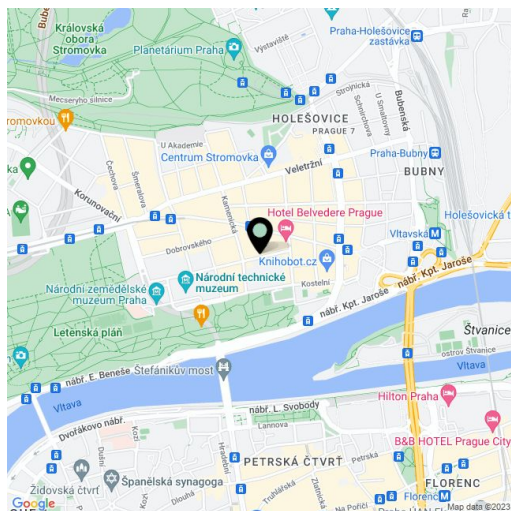
80 m<sup>2</sup>, Prague 7, Holešovice, Letohradská

Total area	84 m <sup>2</sup>
Floor area*	80 m <sup>2</sup>
Balcony	4 m <sup>2</sup>
Parking	-
Cellar	-
PENB	G
Reference number	34228
Available from	Immediately

Benefiting from a south-facing balcony and close proximity to Letná Park, this renovated, furnished 2-bedroom apartment is situated on the 4th and top floor of a well maintained traditional building with preserved original details and no elevator. Located on a quiet street just moments from Letná Park, and within walking distance of Stromovka Park and the city center. A prime location with complete civic amenities and quick transportation connections (trams to the Vltavská and Hradčanská metro stations). The Prague Castle, international schools in Prague 6, and the airport are conveniently accessible.

The apartment includes an **air-conditioned** living room with a fully fitted open plan kitchen and a **balcony** facing the courtyard, an adjacent bedroom with built-in storage and an en-suite bathroom (corner bathtub), a separate bedroom with built-in storage, a toilet, and an entrance hall.

Laminate floors, tiles, wooden beams, gas boiler, dishwasher, microwave oven, kitchenware, TV, bike/pram storage room in the building. Common building charges and water CZK 1500 monthly for 3 persons. Energies are billed separately. Available from mid January 2020.



\* Area of the unit according to the Civil Code. The area consists of the sum total area of the entire unit bounded by perimeter walls.