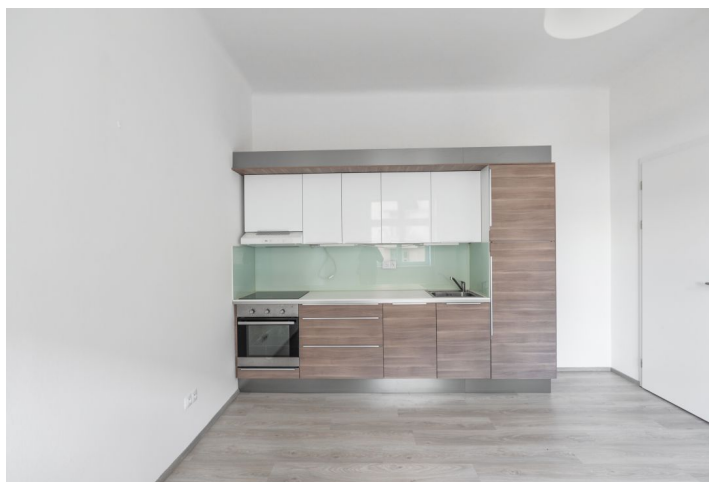




Apartment One-bedroom (2+kk)

Rented

44 m², Prague 4, Nusle, Mikuláše z Husi





Apartment One-bedroom (2+kk)

Rented

44 m², Prague 4, Nusle, Mikuláše z Husi

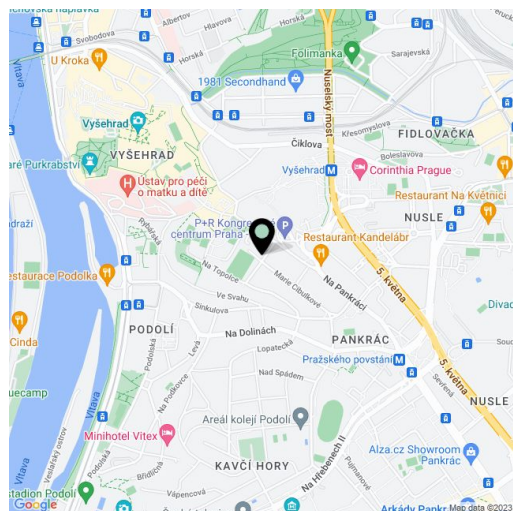
Total area	44 m ²
Parking	-
Cellar	-
PENB	G
Reference number	34508
Available from	Immediately

This is a fully refurbished 1-bedroom apartment on the second floor of a well kept renovated residential building with a lift. Located in a quiet street in Nusle, a short walk from the Vyšehrad Castle Gardens, Lumírovy Gardens, the Vyšehrad metro station (two stops to the city center) and the Prague Congress Centre, within quick reach of the Prague 4 office park and the Arkády Pankrác shopping mall.

The interior features a living room with a fitted open plan kitchen and a dining area, one bedroom, a bathroom including a walk-in shower and a toilet, a fitted **walk-in closet**, and an entrance hall.

Laminated floors, tiles, plastic windows, gas heating, UPC connection.

Basement storage is available at an additional fee. Deposit for service charges and cold water: CZK 550/person/month. Deposit for heating and hot water: CZK 900/month. Electricity is billed separately (transfer).



* Area of the unit according to the Civil Code. The area consists of the sum total area of the entire unit bounded by perimeter walls.



Apartment One-bedroom (2+kk)

44 m², Prague 4, Nusle, Mikuláše z Husi

Rented

