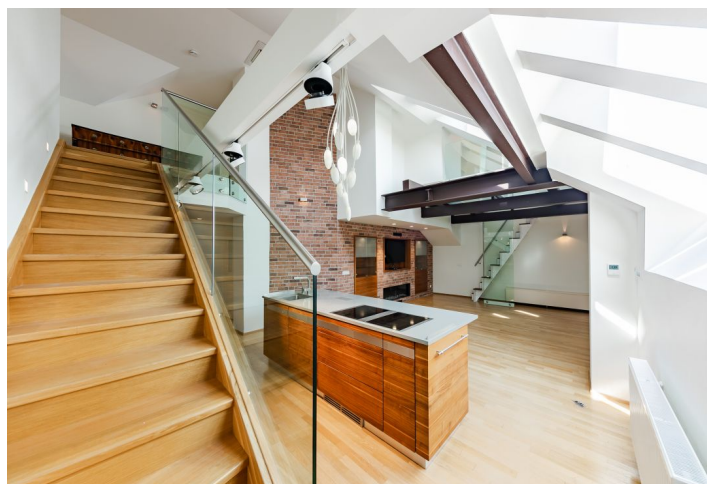




Apartment Six-bedroom (7+kk)

Rented

243 m², Praha 5, Smíchov, V Lesíčku





Apartment Six-bedroom (7+kk)

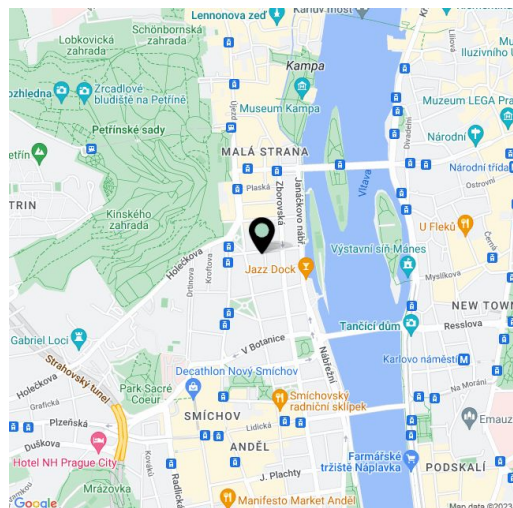
Rented243 m², Praha 5, Smíchov, V Lesíčku

| | |
|------------------|--|
| Total area | 243 m ² |
| Parking | Garage parking nearby is included. |
| Garage | Yes |
| Cellar | Yes |
| Service price | Deposit for service charges, water and heating: CZK 8,000/month. Electricity is billed separately. |
| PENB | G |
| Reference number | 34584 |
| Available from | Immediately |

Top standard air-conditioned penthouse for rent. This is a unfurnished 4-5-bedroom 4-bathroom split-level attic apartment with design furnishings, a formal dining room and a glass reading room with views of the St. Vitus Cathedral and the Hunger Wall. Situated on the fourth top floor of a completely refurbished century-old building with an elegant classical facade, transformed into a city residence. Located in a quiet street in close vicinity of the historic center of Prague, the Vltava embankment, Petřín Park and Kinský Garden, near the Prague Castle and the Charles Bridge. Area with a quick connection to the Nový Smíchov commercial and entertainment zone and Anděl metro station (6 min. to the city center).

The lower level of the apartment features a living room with a bio ethanol **fireplace**, a dining area and a fully fitted top-of-the-line kitchen, a formal dining room, three bedrooms with built-in wardrobes and en-suite bathrooms (double shower with a **steam bath** / bathtub, toilet / shower, toilet), an additional guest toilet, a pantry, and an entrance hall with built-in wardrobes and storage. There is a staircase in the living room leading up to the **glass library**. The upper floor includes a bedroom with built-in wardrobes and a **walk-in closet**, an office with views of the Prague Castle, and a bathroom (shower, toilet). The tenants are also welcome to use a courtyard facing balcony accessible from common areas of the building.

Top quality equipment and finishes, **solid wood parquet floors**, tiles, security entry door, **Rony Plesl light fixtures**, custom made fitted wardrobes with built-in lights, electrically operable windows with electrical exterior blinds, washer, dryer, solid wood **Team 7 kitchen**, **Gutmann, Siemens - Studio Line** and **Liebherr** kitchen appliances, dishwasher, two wine fridges, two ovens, American double door fridge/freezer with an icemaker, central heating, Internet and cable TV connection (included), **cellar**, lift. A **garage parking space** in the Nový Smíchov shopping mall is included (6-7 min. walk).



* Area of the unit according to the Civil Code. The area consists of the sum total area of the entire unit bounded by perimeter walls.

