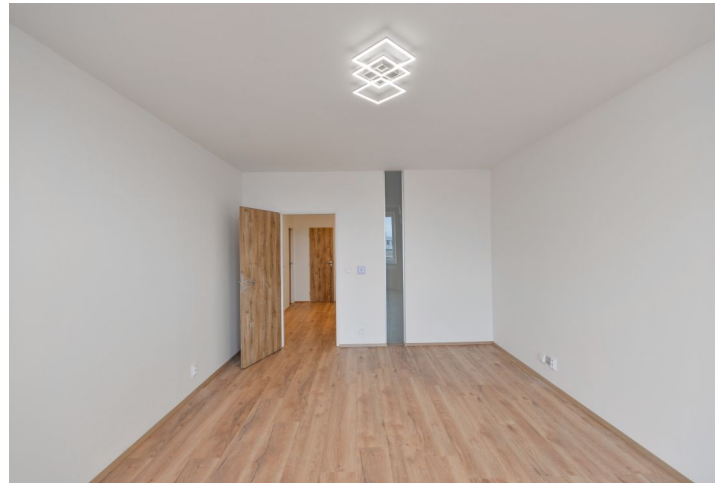




Apartment One-bedroom (2+1)

Rented

64 m², Prague 5, Jinonice, U Kříže





Apartment One-bedroom (2+1)

Rented

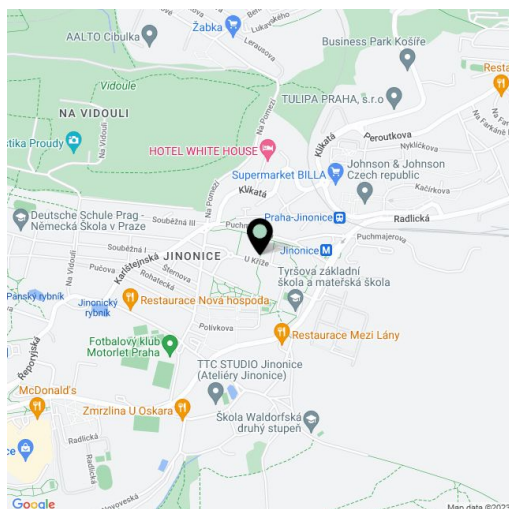
64 m², Prague 5, Jinonice, U Kříže

Total area	69 m ²
Floor area*	64 m ²
Balcony	5 m ²
Parking	On-site garage parking.
Garage	Yes
Cellar	-
PENB	D
Reference number	34925
Available from	Immediately

This is a refurbished, sunny 1-bedroom apartment with a balcony and nice views of Prague, on the third top floor of a modern building with a lift and underground parking. Part of the U Kříže residential complex with lots of greenery, the building is set in a quiet area in the immediate neighborhood of the Vidoule and Prokopské Valley natural preserves, a five min. walk from Jinonice metro station. Location with quality amenities within easy reach, quick access to the German and Japanese Schools, near the Galerie Butovice shopping mall and D5 motorway access road.

The interior includes a living room with a **walk-in closet** and a **balcony**, a separate bedroom with a **walk-in closet**, a fully fitted kitchen with a dining area, a shower room, a separate toilet, and an entrance hall with a built-in wardrobe.

Floating floors, tiles, security entry door, LED lighting, external blinds, dishwasher. An on-site **garage parking** space for CZK 2000/month. Deposit for service charges and utilities: CZK 3,000/month.



* Area of the unit according to the Civil Code. The area consists of the sum total area of the entire unit bounded by perimeter walls.