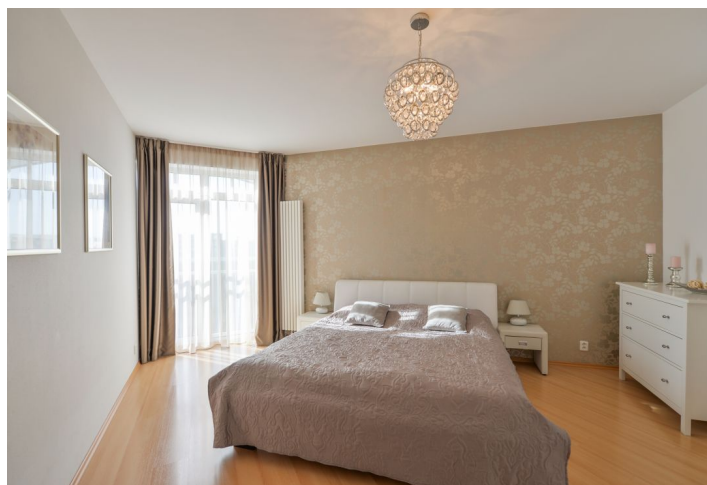
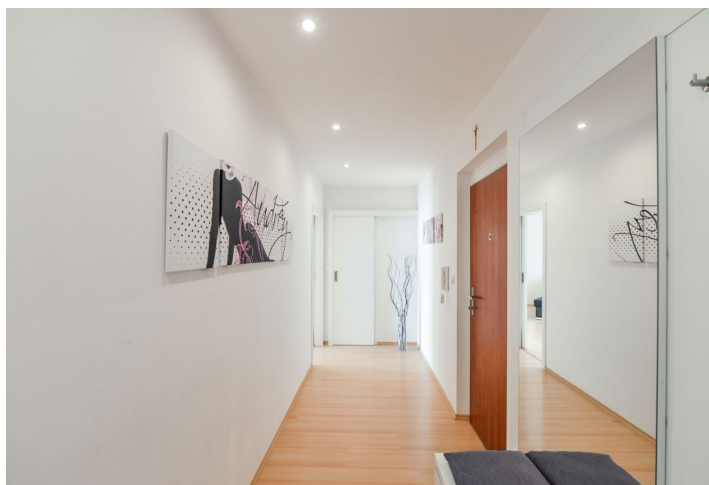




Apartment Three-bedroom (4+kk)

Sold

101 m², Praha 10, Vršovice, Přípotoční





Apartment Three-bedroom (4+kk)

Sold101 m², Praha 10, Vršovice, Přípotoční

Total area	101 m ²
Parking	Garage space in the parking stacker, the possibility to park another car in front of the building
Garage	Yes
Cellar	Yes
PENB	C
Reference number	35153

This bright apartment with parking and views of a park and the surrounding area is situated in an apartment building from 2005 located on quiet Vršická Street near the Botič Stream.

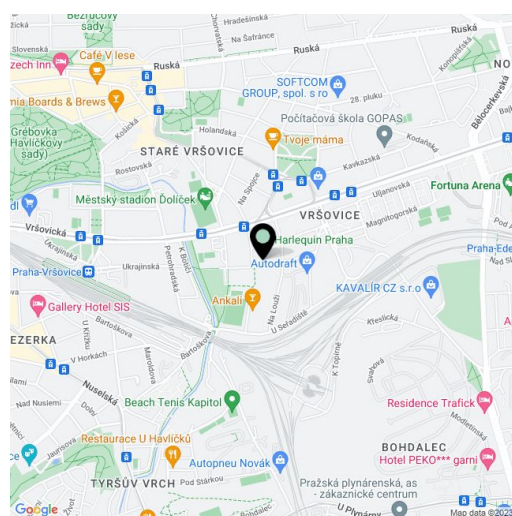
The unit located on the 5th (topmost) floor consists of a living room with a kitchen, a master bedroom with a private bathroom (with a toilet), 2 more bedrooms, a bathroom (with a toilet), a guest toilet, a hallway, and a walk-in wardrobe.

The current owners **partially renovated** the apartment in 2013. Facilities include plastic windows (French windows in the living room and master bedroom), floating floors, high-quality sanitary ware, Bosch kitchen appliances, or built-in wardrobes. Heating is from the central boiler room. The apartment comes with a closet on the same floor and **1 parking space in an automated parking system**. There is also **outdoor parking reserved only for residents with electronic access**.

In the immediate vicinity of the building is a high school, a playground, a **park with a bike trail**, or a cafe. A post office, a health center, several sports venues, small shops, and the large Eden shopping center is also nearby. The location is easily accessible by public transport. Tram and bus stops are located close to the building, and a direct connection with the city center is also provided by trains from the nearby Vršovice Railway Station. The ride to the Main Railway Station is a 5-minute drive away.

Interior 100.5 m², cellar 1.8 m².

In addition to regular property viewings, we also offer **real time video viewings** via WhatsApp, FaceTime, Messenger, Skype, and other apps.



* Area of the unit according to the Civil Code. The area consists of the sum total area of the entire unit bounded by perimeter walls.



Apartment Three-bedroom (4+kk)

101 m², Praha 10, Vršovice, Přípotoční

Sold

