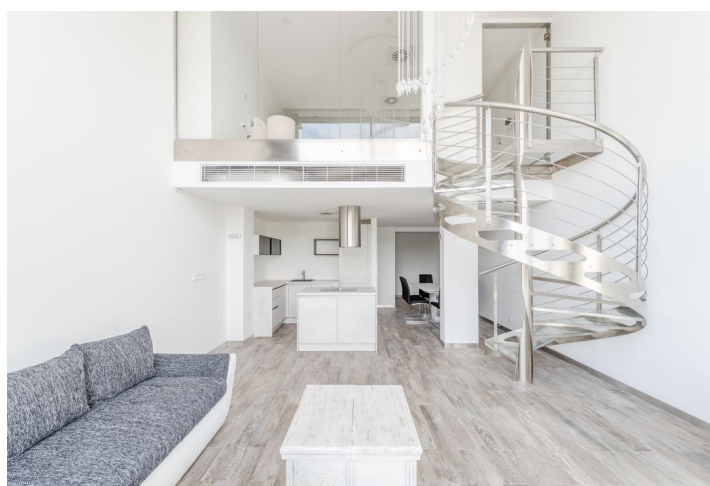
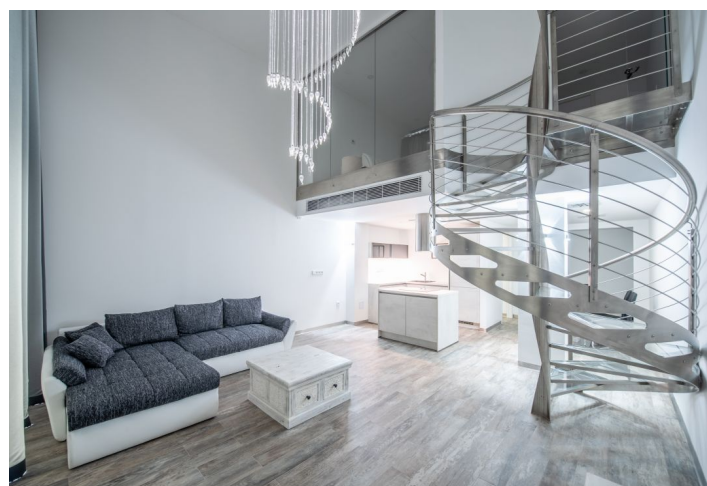




## Apartment One-bedroom (2+1)

Rented

94 m<sup>2</sup>, Bratislava I, Staré Mesto, Pribinova





# Apartment One-bedroom (2+1)

Rented

94 m², Bratislava I, Staré Mesto, Pribinova

Total area	94 m²
Parking	garage space EUR 100
Garage	Yes
Cellar	Yes
Service price	230 EUR Monthly
PENB	B
Reference number	35892
Available from	Immediately

**Stylishly furnished, luxurious one-bedroom duplex apartment in the highly sought-after residential section of the Eurovea building with stunning views of the Danube River.**

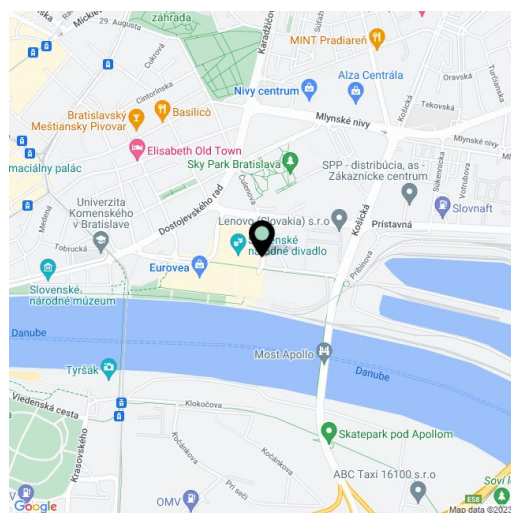
The layout of the apartment consists of a lower level with a living room with a French **balcony**, a kitchen with a central island, a dining area, an entrance hall with a built-in wardrobe, a bathroom with a shower and toilet, and a laundry room. Upstairs is a bedroom with a **walk-in closet** and a second bathroom with a shower and toilet.

Features include ceramic stone floors, motorized curtains, LED lighting, a kitchen with quality new appliances, all still under warranty, sanitary ware imported from Italy, **unique glass tiles** in the bathrooms and Grohe faucets with **Swarovski** crystals, a fiber optic chandelier with hanging Venetian crystals, and a bespoke designer **stainless steel staircase**. The apartment has been completely reconstructed: new electrical wiring, cooling, and heating. The apartment comes with a cellar storage unit and a parking space can be purchased at an extra cost.

The popular residential location near the city center offers a full spectrum of civic amenities, including schools and medical facilities, shops and supermarkets, as well as ample opportunities for sports and exercise. Quick access by car as well as public transport. A pleasant place to live with the Eurovea shopping center and the lovely **Danube promenade**, perfect for evening walks, within easy reach.

Interior 88 m², cellar 6 m²

Rental price EUR 1,600 + EUR 230 energy + EUR 100 parking



\* Area of the unit according to the Civil Code. The area consists of the sum total area of the entire unit bounded by perimeter walls.