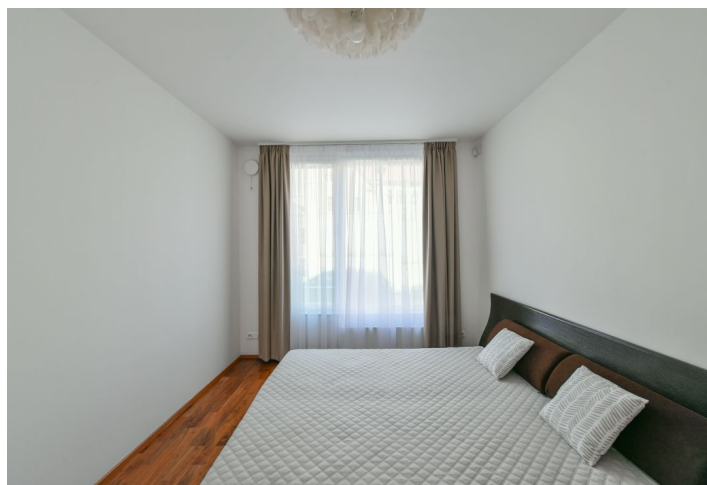
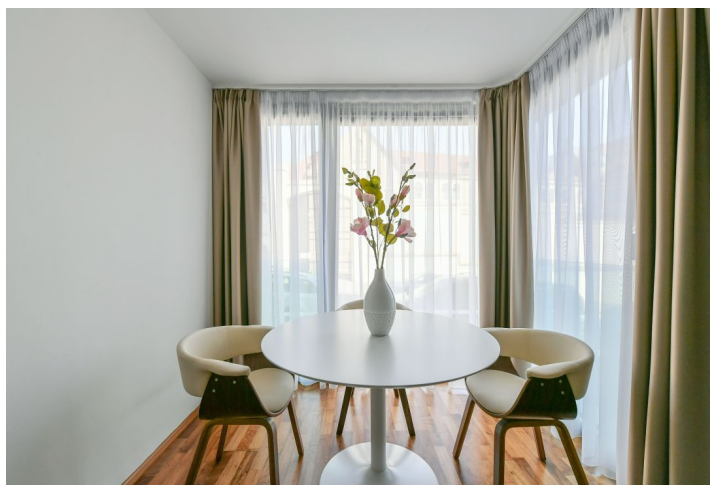
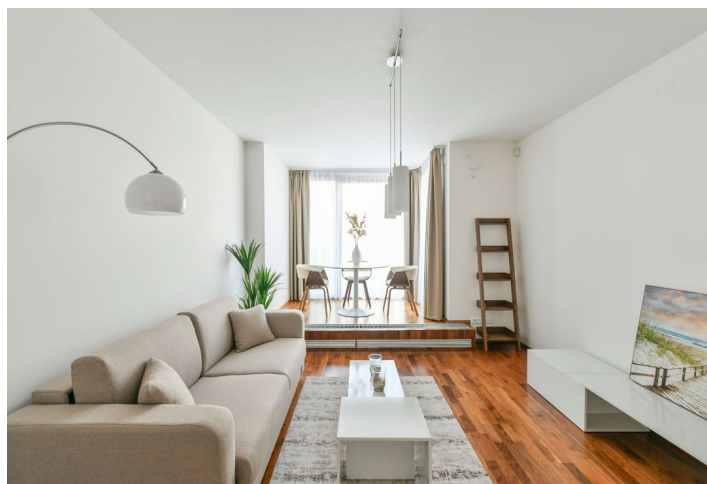




## Apartment One-bedroom (2+kk)

Sold

55 m<sup>2</sup>, Prague 5, Smíchov, Švédská





## Apartment One-bedroom (2+kk)

**Sold**55 m<sup>2</sup>, Prague 5, Smíchov, Švédská

Total area	55 m <sup>2</sup>
Parking	1 garage parking space
Garage	Yes
Cellar	Yes
Service price	4 000 CZK monthly
PENB	G
Reference number	36349

This modern apartment overlooking the former monastery of St. Gabriela is located on the ground floor of the secure Sacre Coeur Residence with a reception and underground parking, set in an attractive residential area of Na Hřebenkách surrounded by greenery and within walking distance of the Anděl pedestrian zone in Smíchov.

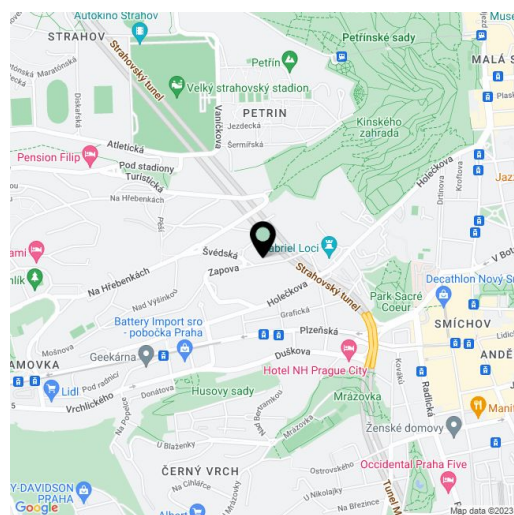
The layout consists of a living room with a kitchen and a sunny bay window, a bedroom, a dressing room, a bathroom with a bathtub, a separate toilet, and a hallway with built-in wardrobes.

Facilities include **wooden floors** and tiles, floor convectors, large-format windows, a security entrance door, and an intercom. Heating is from the central boiler room. The apartment is offered with **all the pictured interior equipment**. The offer price also includes one **garage parking space** and a **cellar** close to the entrance to the building. The residence offers a 24-hour reception, a **garden** with a children's playground in the courtyard, an underground garage, and a CCTV security system.

The location on the border of Prague 5 and 6 boasts an abundance of greenery. In the immediate vicinity is the **Sacré Coeur Park**, through which you can easily walk to the large shopping and entertainment center and the metro station at Anděl. Just a few steps away are the **Kinský and Petřínské Sady Gardens**. There is a grocery store or elementary school nearby, and other amenities are within easy reach. There is a bus stop nearby with quick and direct connections to the city center - the ride to Charles Square takes 7 minutes. Driving by car is made easy by the nearby entrance to the Strahov Tunnel and Mrázovka.

Interior 55 m<sup>2</sup>, cellar 6 m<sup>2</sup>.

\* Area of the unit according to the Civil Code. The area consists of the sum total area of the entire unit bounded by perimeter walls.





# Apartment One-bedroom (2+kk)

55 m<sup>2</sup>, Prague 5, Smíchov, Švédská

Sold

