



## House Four-bedroom (5+1)

Sold

188 m<sup>2</sup>, Praha-západ, Zdiměřice, Rorýsová





## House Four-bedroom (5+1)

**Sold**188 m<sup>2</sup>, Praha-západ, Zdiměřice, Rorýsová

Plot	852 m <sup>2</sup>
Foot print	190 m <sup>2</sup>
Garden	662 m <sup>2</sup>
Parking	Double garage, outdoor parking space
Garage	Yes
Cellar	-
PENB	C
Reference number	36741

This airy family house with two terraces, a garage, and plenty of storage space is part of the quiet Jesenice residential zone of Zdiměřice with excellent transport links thanks to easy connections to the Prague Ring Road and the D1 highway. Průhonice Park and a prestigious international school are both nearby.

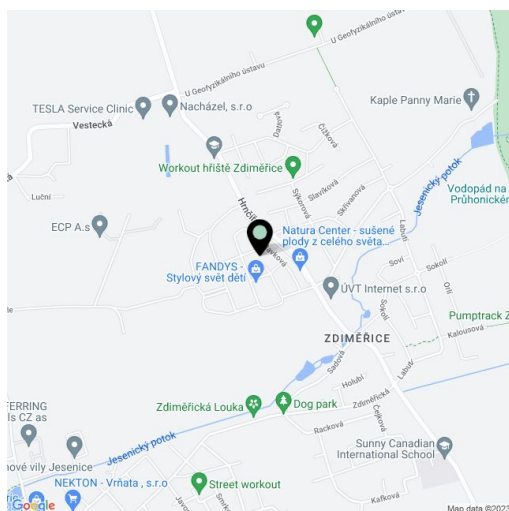
The ground floor consists of a living room **with exposed ceiling beams** and connected to a **covered terrace**, a kitchen with a dining room, a study, a bathroom (with a bathtub), a pantry, a laundry room, utility facilities/storage space, a closet, a separate toilet, a foyer, and a corridor with access to the **double garage**. Upstairs, there is a bathroom (with a bathtub, shower, and bidet), a separate toilet, and 3 bedrooms, one with a large walk-in closet and one with access to a **terrace** that guarantees **perfect privacy**. There is storage space in the attic.

The interior is equipped with a **fireplace**, laminate floors, linoleum, **wooden windows** with blinds and insect screens, a kitchen (with a dishwasher, induction hob, microwave, 2 refrigerators), a **laundry shoot**, and a security system. The garden has mature trees, a **well**, a lawn, and a paved parking area.

Right next to the house is a playground and the surrounding area offers several **sports activities**: a golf course, mini-golf, or tennis and beach volleyball courts. Civic amenities are in the center of Jesenice or in neighboring Průhonice. A new elementary school is being built right in Zdiměřice. The **Sunny Canadian International School** is a 2-minute drive from the house. The place is easily accessible thanks to the nearby exit to the Prague Ring Road; driving will be further accelerated by the completion of the Vestecká Connecting Road. Within 10 minutes by bike along a comfortable bike trail off the main road, you will get to unique **Průhonice Park**.

Useable area 188 m<sup>2</sup>, built-up area 190 m<sup>2</sup>, garden 662 m<sup>2</sup>, land 852 m<sup>2</sup>.

In addition to regular property viewings, we also offer real-time video viewings via WhatsApp, FaceTime, Messenger, Skype, and other apps.



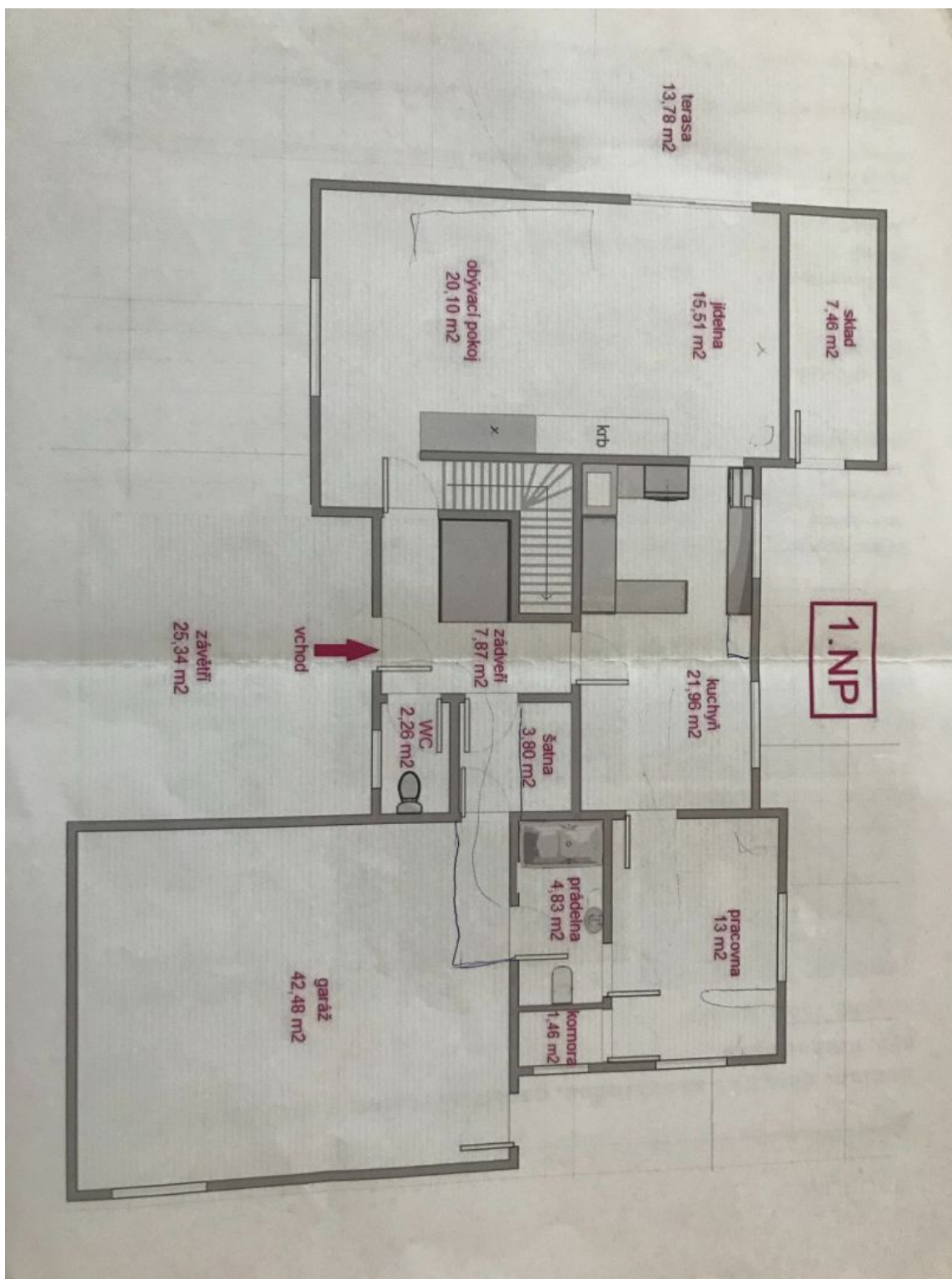




## House Four-bedroom (5+1)

188 m<sup>2</sup>, Praha-západ, Zdiměřice, Rorýsová

**Sold**





## House Four-bedroom (5+1)

188 m<sup>2</sup>, Praha-západ, Zdiměřice, Rorýsová

Sold

