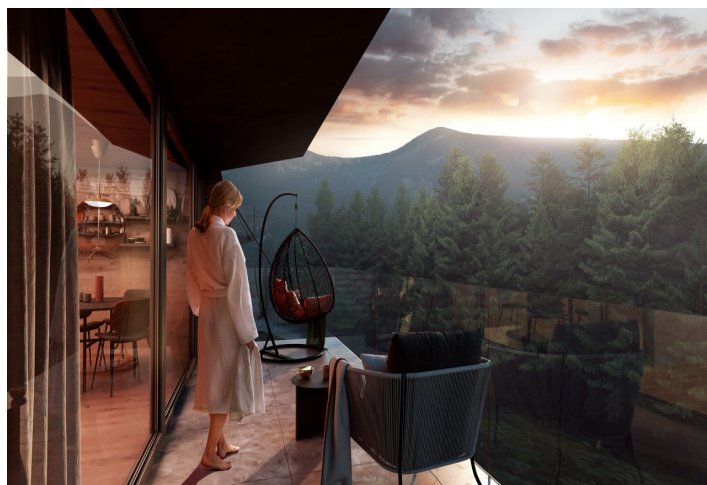




Apartment Two-bedroom (3+kk)

Sold

129.7 m², Trutnov, Pec pod Sněžkou





Apartment Two-bedroom (3+kk)

Sold129.7 m², Trutnov, Pec pod Sněžkou

Total area	160 m ²
Floor area*	130 m ²
Loggia	30 m ²
Parking	1 parking spaces
Cellar	-
PENB	G
Reference number	38981

* Area of the unit according to the Civil Code. The area consists of the sum total area of the entire unit bounded by perimeter walls.

Would you like to have your own private slice of the mountains that you don't need to take care of? Surrounded by nature with your family and enjoying your time together, or planning a weekend alone to recharge your batteries? Be the first to ski down the slope in the morning, take a walk through the woods for hours, listen to its sounds and breathe in its scents, observe wildlife in its natural habitat, go to the sauna, take a dip in the pool, have a drink in the private lobby? This boutique project with 10 private apartments in the largest Czech ski resort with views of Mount Sněžka makes all of this possible. Estimated completion in Q4/2023.

In the [Bramberk Apartments](#) project, you're not just buying an apartment. You can also relax in the modern **lounge** with a kitchen and self-service bar, the **wellness** area with a 15-meter **pool and Jacuzzi**, the relaxation room, or the **sunny terrace**. An apartment comes with **problem-free parking** - 1 parking space near the apartment and 1 garage space to be purchased directly in Pec pod Sněžkou in the Hotel Javor, where you can park not only during the day while you go skiing, but also in the evening when you go out to one the town's famous restaurants for dinner. Complete services, including those that cater to your personal comfort (delivery, shopping, securing firewood, ski passes, etc.) will be provided by the administrator, even during your absence.

This duplex apartment offers, on the entrance floor (on the 1st underground floor), a living room, a kitchen with a dining room, a hallway, a toilet, and a foyer. Upstairs are 2 large bedrooms, a bathroom, and a room with a preparation for an **infrared sauna**. All rooms have access to one of the **south-facing loggias** with beautiful views of the forests of the Krkonoše National Park. With a touch of unpretentious luxury, the interiors are decorated in natural colors in muted tones. Facilities include **air-conditioning** with a heating function, an **oak staircase**, three-layer **oak floors** with a choice of 3 colors, large aluminum windows and loggia doors with insulated triple-glazed panes, wooden entrance doors with a security lock, fire protection, and hydraulic shutters, a videophone, **Villeroy & Boch and Kaldewei sanitary ware**, loggia heating, and a **fireplace** (choice of 3 types). A customized interior can be created by the **Konstepti studio** if the client wishes.

The building with 2 elevators is the result of the reconstruction of an architecturally important recreation center for the State Bank of Czechoslovakia from the 1970s designed by the architect **Vladimír Vokatý**, co-author of the **O2 arena**. The project includes large plots of land, guaranteeing protection against development in the immediate vicinity. The new apartments are located 200 meters from the **Hnědý Vrch ski lift** and 1 km from the **Javor ski lift**. Hiking trails, including one that goes up **Mount Sněžka** begin just outside the building. The drive from Prague to the apartment takes about 135 minutes and from Hradec Králové less than 90 minutes.



Apartment Two-bedroom (3+kk)

Sold129.7 m², Trutnov, Pec pod Sněžkou

Total area	160 m ²
Floor area*	130 m ²
Loggia	30 m ²
Parking	1 parking spaces
Cellar	-
PENB	G
Reference number	38981

Floor area 129.7 m², loggia 30.1 m².

For more information about the project visit the website

www.apartmanybramberk.cz.


* Area of the unit according to the Civil Code. The area consists of the sum total area of the entire unit bounded by perimeter walls.



Apartment Two-bedroom (3+kk)

Sold

129.7 m², Trutnov, Pec pod Sněžkou



BRAMBERK

apartmánův

APARTMÁN ČÍSLO 01

Dispozice	3+KK
Podlaží	1. PP a 1. NP
Celková plocha apartmánu*	129,7 m ²
Plocha lodžie	30,1 m ²
Parkovací stání	Ano

01 Předsiň	945 m ²
02 Toileta	3,54 m ²
03 Chodba	6,08 m ²
04 Obytný prostor	41,98 m ²
05 Chodba	5,23 m ²
06 Ložnice	19,01 m ²
07 Ložnice	19,01 m ²
08 Koupelna	7,07 m ²
09 Sauna	4,64 m ²
Ostatní plochy a příčky	13,69 m²

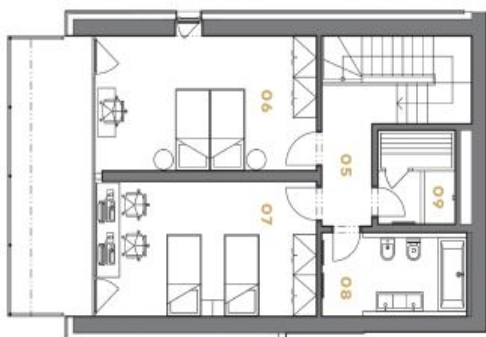
Exkluzivní zástoupení:
svoboda&williams | **CHRISTIE'S**
 INTERNATIONAL REAL ESTATE



1. PP



1. NP



* Apartmánův Bramberk si využívá práva na změny. Veškeré podrobnosti a informace jsou pouze orientační. Součástí kupní ceny apartmánu není nábytek. Celková plocha apartmánu je včetně ploch příček a vnitřních nosných stěn dle výkresu nůřbení 366/2013 Sb.

apartmanybramberk.cz

Na Perštýně 2, 110 00, Praha 1
 +420 257 328 281, +420 724 551 238
info@apartmanybramberk.cz