



## House Three-bedroom (4+kk)

Sold

129 m<sup>2</sup>, Beroun, Vysoký Újezd, Na Pískách





## House Three-bedroom (4+kk)

**Sold**129 m<sup>2</sup>, Beroun, Vysoký Újezd, Na Pískách

Plot	947 m <sup>2</sup>
Foot print	173 m <sup>2</sup>
Garden	774 m <sup>2</sup>
Parking	Parking on the plot
Cellar	-
PENB	B
Reference number	39690

This new one-story family house with a flat roof, a south-facing terrace, and a sunny garden is currently being built in the developing village of Vysoký Újezd with a golf resort. Vysoký Újezd is located near the southwestern edge of Prague, close to the Bohemian Karst and the deep Křivoklát forests. Expected completion date is the 2nd half of 2022.

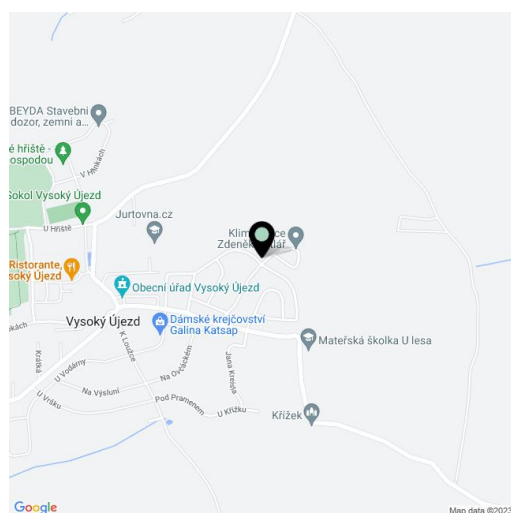
The practical floor plan consists of a living room with a ceiling height of 3.5 sq. m., an open plan kitchen, and access to the **garden terrace**, a master bedroom with a walk-in dressing room and en-suite bathroom, another 2 bedrooms, a central bathroom, separate toilet, a pantry, a closet, and a spacious entrance hall.

The house will have anthracite colored **aluminum windows** with **exterior blinds**, tiles, and brand-name sanitary ware. Heating will be provided by a gas boiler. Parking is available on 2 outdoor parking spaces.

There is a grocery store in the village and a few minutes' walk from the future house is a kindergarten and elementary school, a post office, a municipal office, a library, and a **suburban bus stop** that goes to the Zličín metro station. Thanks to the nearby D5 highway, driving by car is very fast. The village is known mainly thanks to the **Albatross Golf Resort** with an **18-hole course** and restaurant.

Interior 129 m<sup>2</sup>, built-up area 173 m<sup>2</sup>, garden 774 m<sup>2</sup>, land 947 m<sup>2</sup>.

In addition to regular property viewings, we also offer real-time video viewings via WhatsApp, FaceTime, Messenger, Skype, and other apps.

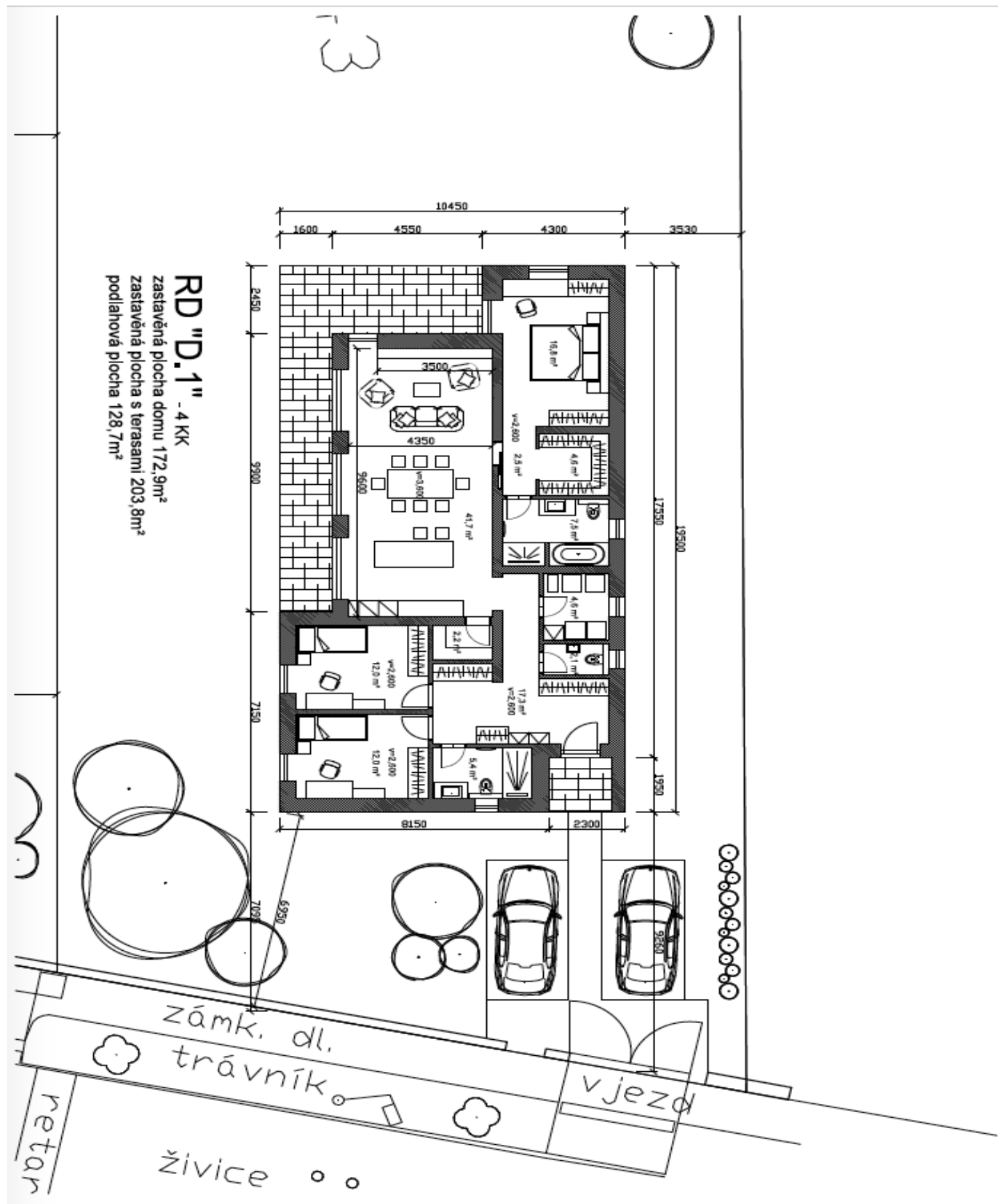




# House Three-bedroom (4+kk)

Sold

129 m<sup>2</sup>, Beroun, Vysoký Újezd, Na Pískách







# House Three-bedroom (4+kk)

Sold

129 m<sup>2</sup>, Beroun, Vysoký Újezd, Na Pískách

**SCHEMA PLOCHÉ SCHTĚCHY**

**POHLED VÝCHODNÍ**

**POHLED ZÁPADNÍ**

**POHLED SEVERNÍ**

**POHLED JIŽNÍ**

**LEGENDA:**

- FASÁDA BILÁ
- FASÁDA ŠEDÁ
- OBKLAD KÁMEN - ANTRACIT
- OKENNÍ RÁMY, DVEŘE - ANTRACIT

**RD "D.1" - 4 KK**  
 Zastavěná plocha domu 172,9m<sup>2</sup>  
 Zastavěná plocha s terasami 203,8m<sup>2</sup>  
 podlahová plocha 128,7m<sup>2</sup>

**PLOCHÁ STŘECHA**