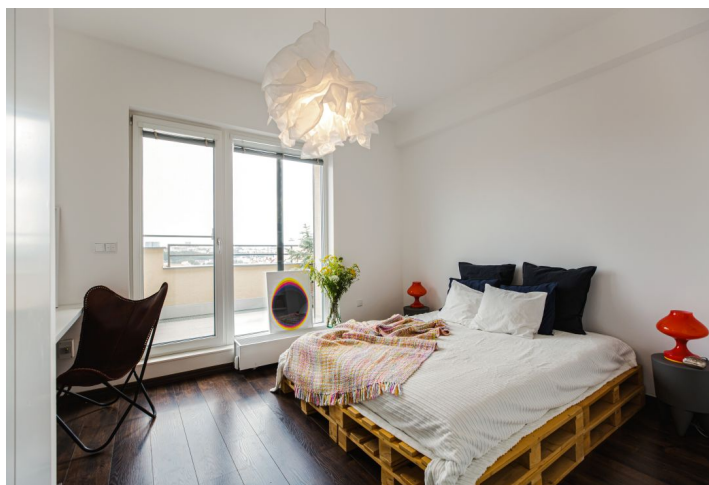




Apartment One-bedroom (2+kk)

Sold

42 m², Prague 10, Vršovice, Bulharská





Apartment One-bedroom (2+kk)

Sold42 m², Prague 10, Vršovice, Bulharská

Total area	60 m ²
Floor area*	42 m ²
Terrace	18 m ²
Parking	-
Cellar	Yes
PENB	G
Reference number	40504

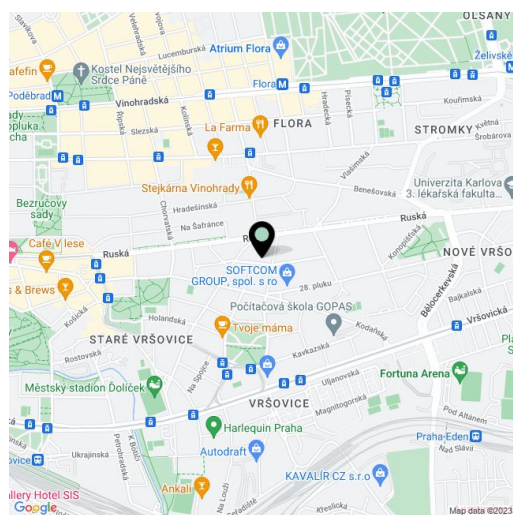
This fully refurbished designer apartment with an 18 sq. m. terrace is located on the topmost 6th floor of a renovated apartment building with a front garden and an elevator in a quiet residential area on the border of Vinohrady and Vršovice, a few minutes' walk from Heroldovy Sady Park and the park on Svatopluk Čech Square, or iconic Krymská Street. This nice location with excellent amenities and quick access to the city center is only a few minutes' walk from the Vršovické náměstí tram stop with direct links to the Náměstí Míru and I.P. Pavlova metro stations.

The layout consists of a living room with a fully equipped open plan kitchen, an **air-conditioned bedroom** with **built-in wardrobes**, a double-sided work corner, a bathroom with a shower, a guest toilet with a bidet shower, an entrance hall with built-in wardrobes, and a utility room. **The terrace is accessible from both main rooms.**

Large storage space above the entrance hall, vinyl flooring, tiles, security entry door, central electric heating, **electric exterior blinds**, dishwasher, microwave, mosquito nets, southwest-facing terrace with plants, cellar, electronic entrance, shared storage on the mezzanine of the building.

Interior 42 m², terrace 18 m².

In addition to regular property viewings, we also offer **real-time video viewings** via WhatsApp, FaceTime, Messenger, Skype, and other apps.



* Area of the unit according to the Civil Code. The area consists of the sum total area of the entire unit bounded by perimeter walls.

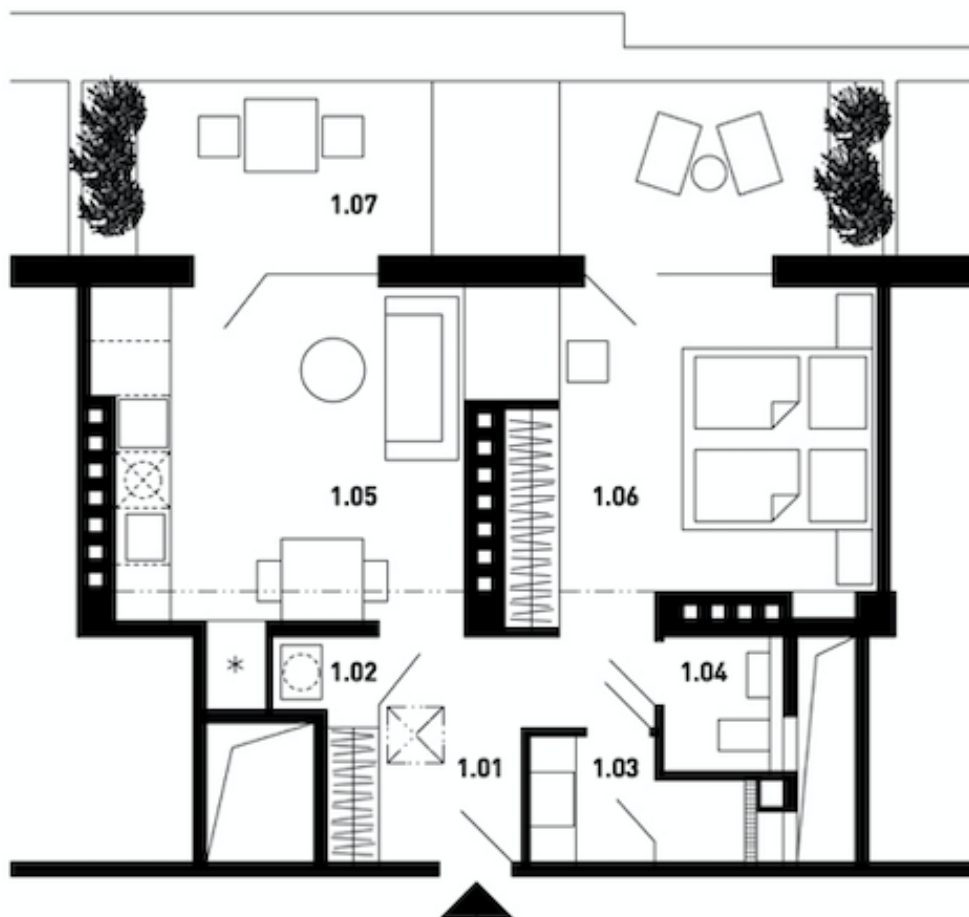


Apartment One-bedroom (2+kk)

42 m², Prague 10, Vršovice, Bulharská

Sold

NOVÝ STAV



- 1.01 CHODBA
- 1.02 KOMORA
- 1.03 KOUPELNA
- 1.04 WC
- 1.05 OBÝVACÍ PROSTOR
- 1.06 LOŽNICE
- 1.07 TERASA

