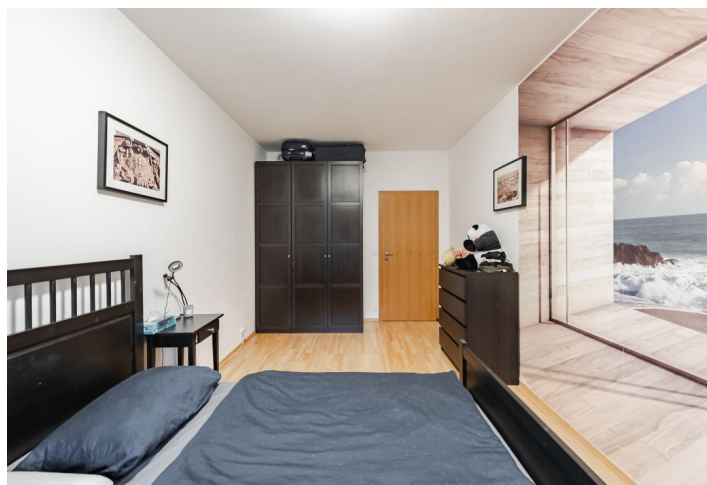




Apartment One-bedroom (2+kk)

Sold

60 m², Prague 3, Žižkov, Jeseniova





Apartment One-bedroom (2+kk)

Sold60 m², Prague 3, Žižkov, Jeseniova

Total area	63 m ²
Floor area*	60 m ²
Balcony	3 m ²
Parking	Garage parking space for additional price CZK 1.000.000
Garage	Yes
Cellar	Yes
PENB	C
Reference number	41649

This bright apartment with barrier-free access and a balcony is located on the 4th floor of a secure apartment building with an elevator. An easily accessible area within reach of full infrastructure, on a one-way street next to Parukářka Park. A garage space is offered for additional price of 1.000.000 CZK.

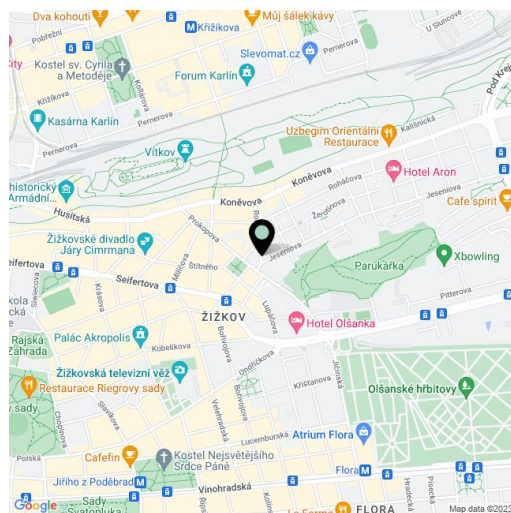
The floor area of the apartment is divided into a living room with a kitchen and a **balcony**, 1 bedroom, a bathroom (toilet, bathtub, sink), a closet (with a connection for a washing machine), and a foyer. The living room faces northwest towards a side street, and the bedroom southeast towards the **greenery of the park**.

The building was built in 2008; facilities include **wooden floors and wooden Euro windows**. The kitchen is fully equipped with built-in appliances; heating is provided by a Wolf gas boiler. The purchase price includes a **cellar** accessible by elevator. The entrance to the building is via a **chip**; the **camera system** also contributes to a high level of security.

Complete services are at a convenient distance (shops including a supermarket, restaurants, cafes, a pharmacy, and a post office). The ride to the city center takes only a few minutes from the nearby bus stop, and there is also a tram stop within walking distance. The location is made even more pleasant by **Parukářka Park**, which is right next to the building.

Floor area 60 m², balcony 2.6 m², cellar 1.8 m².

In addition to regular property viewings, we also offer real-time video viewings via WhatsApp, FaceTime, Messenger, Skype, and other apps.



* Size of the unit according to the Housing Act.
The area consists of the sum total of the internal area of every room.