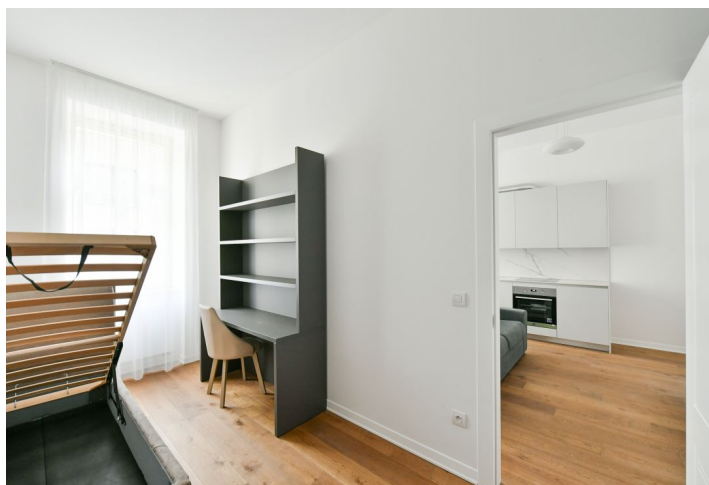
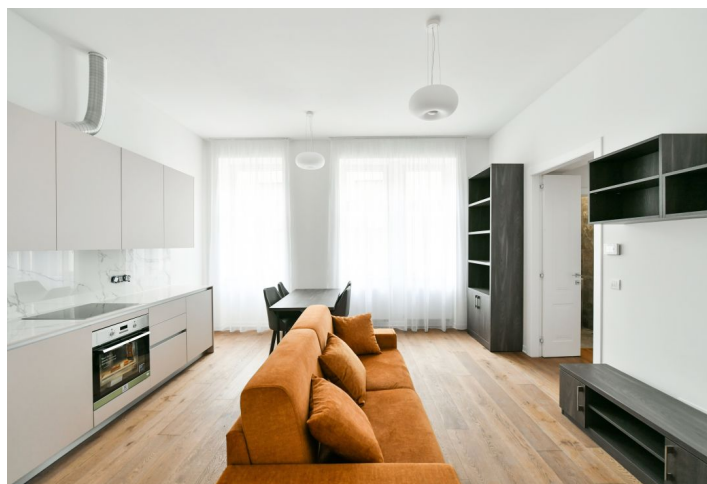
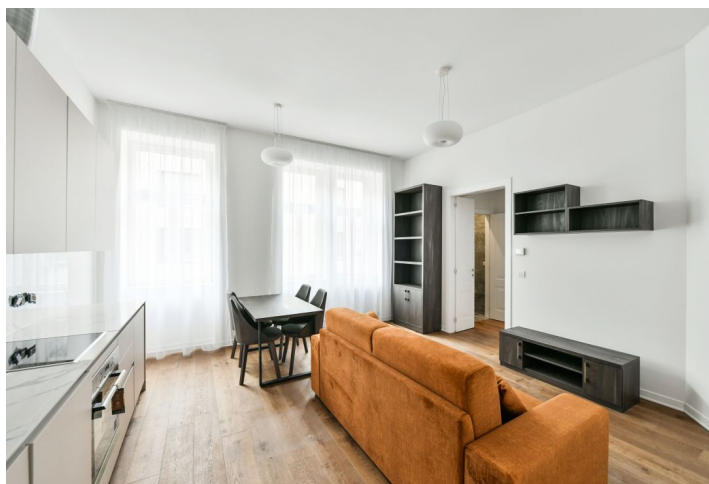




## Apartment Five-bedroom (6+kk)

135 m<sup>2</sup>, Prague 5, Smichov, Kmochova

Ask for price





## Apartment Five-bedroom (6+kk)

Ask for price

135 m<sup>2</sup>, Prague 5, Smíchov, Kmochova

Total area	135 m <sup>2</sup>
Parking	-
Cellar	Yes
PENB	G
Reference number	41676

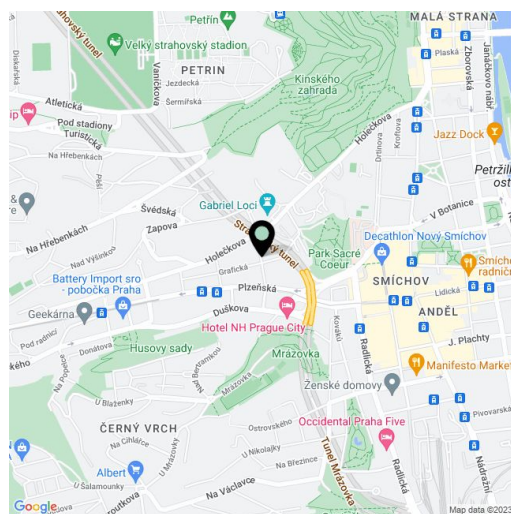
A set of 2 completely renovated and well-equipped apartments for sale as a perfect investment opportunity with a total floor area of 181 sq. m. in a residence created through the reconstruction of a historic brick building with an elevator. An attractive area in Hřebenky near Sacré Coeur Park, within walking distance of the Anděl center in Smíchov.

The two-bedroom apartment on the 1st floor has a floor area of 68.2 sq. m., and the second **two-bedroom** unit on the 1st floor has a floor area of 67.1 sq. m. Both units are currently **rented**.

The interiors have quality **wooden floors**, tiles, fully equipped kitchens (including dishwashers), security entrance doors, and energy-saving faucets. Central heating. All units come with a **cellar**.

The corner brick building with a decorative façade, in which the offered apartments are located, stands on a side street between **Sacré Coeur Park**, the Petřín Gardens, and **Bertramka Garden**. A grocery store, a cafe, and an elementary school are nearby and the **French Lyceum** as well as a host of other services are within easy reach. Buses provide connections to the Karlovo náměstí metro station, and the **Anděl** tram stop and metro station is within walking distance. When traveling by car, an advantage is the easy connection to a tunnel complex.

Total floor area 135.3 m<sup>2</sup>, cellars 1.5 m<sup>2</sup>, and 1.5 m<sup>2</sup>.



\* Area of the unit according to the Civil Code. The area consists of the sum total area of the entire unit bounded by perimeter walls.