



Apartment One-bedroom (2+kk)

Sold

89 m², Brno-město, Brno - střed, Štefánikova





Apartment One-bedroom (2+kk)

Sold89 m², Brno-město, Brno - střed, Štefánikova

Total area	89 m ²
Parking	-
Cellar	Yes
PENB	G
Reference number	41986

This bright corner apartment on the 2nd floor of an elegant palace built in the 19th century by the important Austrian architect Josef Nebehosteny, co-author of the Mahen Theater, is in a prestigious location near Lužánky Park. The apartment is one of the finest of the 12 attic units that are currently being built in this distinctive corner building. Due to the high demand for rental apartments in this location, the unit is suitable as an investment.

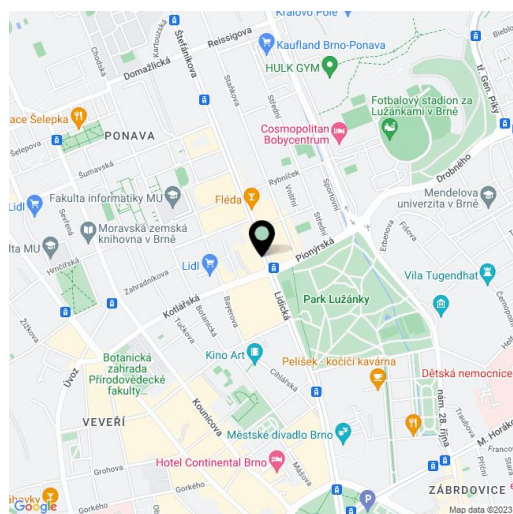
The dominant feature of this attic apartment is the 50-meter open living room with a preparation for a kitchen, illuminated by 4 skylights. There is also a bedroom with a gallery, a bathroom (shower, toilet, sink), and a hallway.

The quality facilities include multi-layer wooden floors, hardwood oak moldings, Dakea skylights, fireproof doors, paneled interior doors, underfloor heating in the bathroom, large-format tiles by Story of Stone, a Connet air sink on an oak wood counter, a wall-mounted toilet with an AquaBlade system and SoftClose seat, a data socket, or an EPS sensor. District heating from a heating plant; hot water by a boiler. The unit comes with a cellar storage unit, and you can rent a parking space located behind the building. There is no elevator.

The building is located in a beautiful and sought-after part of the Veverí district. Right next to the building is a public transport stop, and the city center is 2 stops away. All of Brno's university faculties are within a short trolley bus ride. The building is located right by the entrance to the nicely landscaped Lužánky Park with a wide range of sports activities. The district adjacent to the center of Brno boasts many important architectural monuments and offers complete civic amenities. The world-famous Villa Tugendhat stands in the neighboring district of Černá Pole.

Total usable area 88.8 m² of which floor area 81.9 m², gallery 6.9 m².

Due to the current situation, the investor reserves the right to make minor adjustments to the standards.



* Area of the unit according to the Civil Code. The area consists of the sum total area of the entire unit bounded by perimeter walls.



Apartment One-bedroom (2+kk)

89 m², Brno-město, Brno - střed, Štefánikova

Sold

Byt 2+kk

ŠTEFÁNIKOVA 1

1	Obýtná místnost	48,4 m ²
2	Pokoj	20,5 m ²
3	Vstup	6,5 m ²
4	Koupelna	4,5 m ²
5	Galerie	6,9 m ²

Podlahová plocha dle OZ

81,9 m²

Plocha Galerie

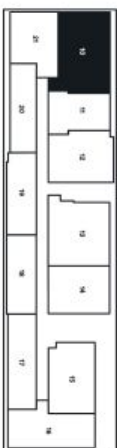
6,9 m²

Celková užitná plocha

88,8 m²

Sklep č.003

5,0 m²

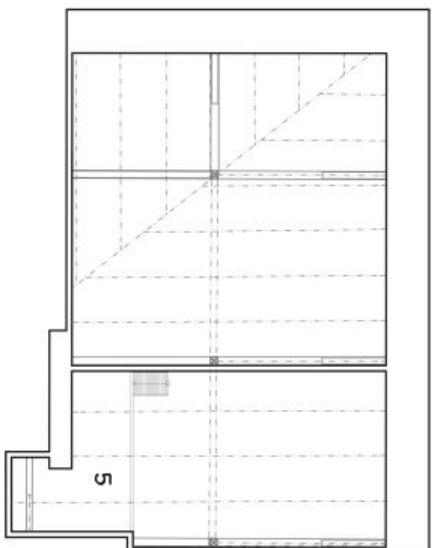
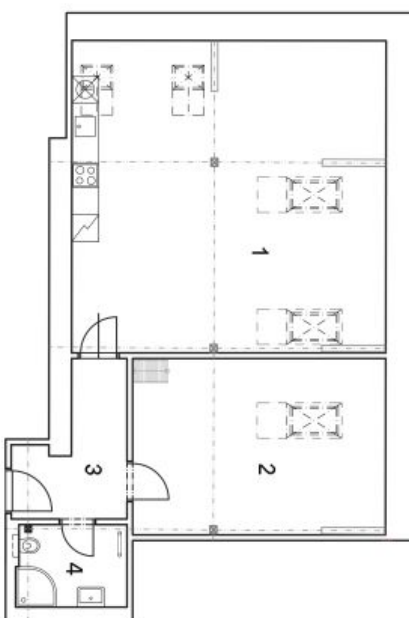


svoboda&williams | CHRISTIE'S
INTERNATIONAL REAL ESTATE

REALDATA



Schéma půdorysu domu představuje dispoziční řešení jednotky. Kuchyňská linka a nábytek nejsou součástí dodávky domu, zařizení je zobrazeno pouze pro názornost. Veškeré materiály a informace jsou pouze orientační. Developer si vyhrazuje právo na změny a upřesnění.



Jednotka č. 836/10