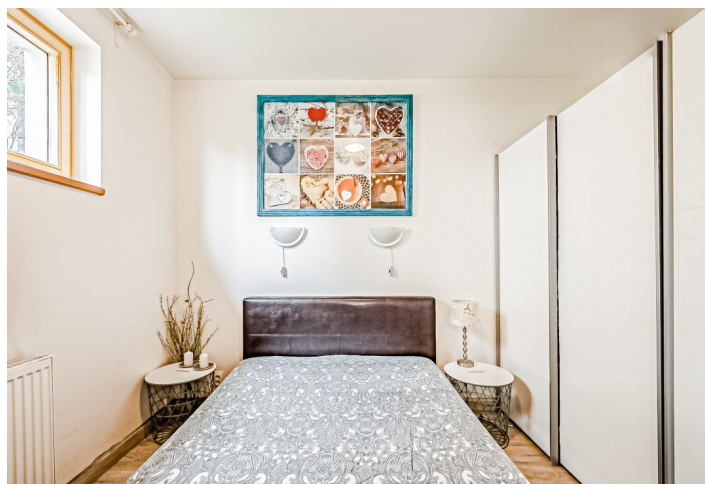




Apartment One-bedroom (2+kk)

€ 301 932 | CZK 7 500 000

37 m², Prague 4, Krč, Višňová





Apartment One-bedroom (2+kk)

€ 301 932 | CZK 7 500 000

37 m², Prague 4, Krč, Višňová

Total area	37 m²
Garden	135 m²
Parking	-
Cellar	Yes
Service price	3 300 CZK monthly
PENB	G
Reference number	42595

This apartment with an over 100 meter garden is situated on the ground floor of a modern three-story apartment building located in a quiet residential area of Prague 4 – Krč surrounded by forest parks. A planned new metro station of the future line D will be near the building.

The corner apartment consists of a living room with a kitchen, 1 small bedroom separated by a sliding door, a bathroom (with a **massage bathtub**, sink, and toilet), and a foyer. The living room has access to the **west-facing covered terrace** and then to the **garden**.

The one-room apartment building was built in 2014. Floors are tiled with **underfloor heating**; windows are **wooden Euro** and the entrance door is security. Facilities include a built-in wardrobe in the bedroom, a kitchen equipped with **Bosch** appliances, and radiators. The garden has its own **water well** (for watering). The apartment includes a **cellar**; it is possible to park without any problems on the street near the building.

A great location on an incredibly **quiet street** in a residential development with **mature gardens and bushy trees**, yet within easy reach of everything you need. A few steps from the building is a bus stop, from where you can get to the Budějovická metro station in no time; there is a train station within walking distance, and the train ride to the city center (Main Railway Station) takes less than 15 minutes. In the future, a new D line station will also be within walking distance. The surrounding area offers opportunities for **sports**, including a **golf driving range**, and large **wooded areas** are ideal for walking, jogging, and walking dogs.

Floor area 37 m², garden 135 m².

* Area of the unit according to the Civil Code. The area consists of the sum total area of the entire unit bounded by perimeter walls.

In addition to regular property viewings, we also offer real-time video viewings via WhatsApp, FaceTime, Messenger, Skype, and other apps.