



## Apartment Three-bedroom (4+1)

Rented

140 m<sup>2</sup>, Prague 2, Vinohrady, Americká





## Apartment Three-bedroom (4+1)

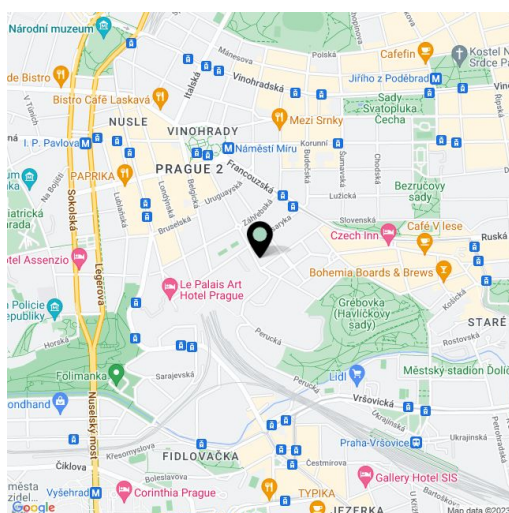
**Rented**140 m<sup>2</sup>, Prague 2, Vinohrady, Americká

Total area	140 m <sup>2</sup>
Parking	Garage space.
Garage	Yes
Cellar	Yes
PENB	G
Reference number	9078
Available from	Immediately

**Spacious 3-bedroom 2-bathroom apartment available for rent. Situated on the second floor of a building with an elevator in a modern residential project in a natural green part of Vinohrady, within walking distance of Havlíčkovy Sady Park and the Náměstí Míru tram stop and metro station.**

The interior features a living room, a fully fitted kitchen that can be separated by folding doors, a master bedroom with an en-suite bathroom (bathtub, shower, double sink, toilet) and two walk-in closets, a second bedroom with a walk-in closet, a second bathroom with a bathtub, two separate toilets, and an entry hall.

Quality materials, plenty of built-in storage, wood and tile floors, French windows, washer, dryer, dishwasher, microwave oven, central switch. One underground garage parking space and basement unit included in the rent. Building charges, utilities, and Internet CZK 11,000/měsíc.



\* Area of the unit according to the Civil Code. The area consists of the sum total area of the entire unit bounded by perimeter walls.



# Apartment Three-bedroom (4+1)

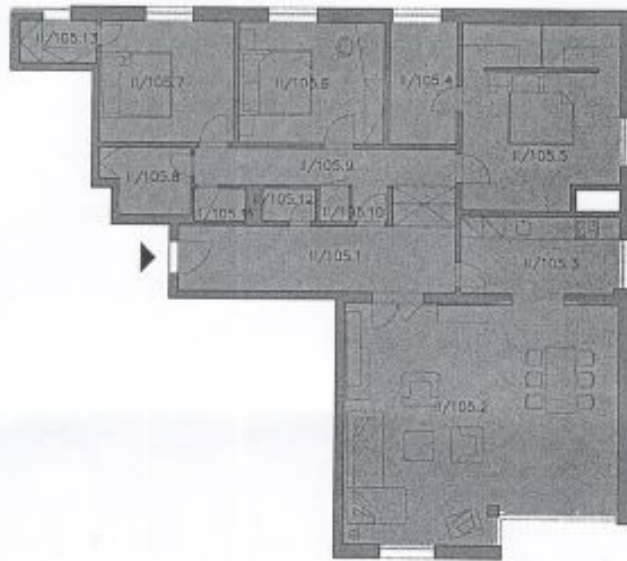
140 m<sup>2</sup>, Prague 2, Vinohrady, Americká

Rented

**M 1:150**

0 1 2 3 4 5 6 7 8 9 10m

TYTO VÝKRESY SLOUŽÍ POUZE K INFORMATIVNÍM ÚČELŮM.  
THESE PLANS ARE FOR INFORMATION PURPOSES ONLY.



8/105.1	HALA / HALL	14,70
8/105.2	OBÝVACÍ POKOJ / LIVING ROOM	48,70
8/105.3	KUCHYŇ / KITCHEN	8,10
8/105.4	KOUPELNA / BATHROOM	6,20
8/105.5	LOŽNICE / BEDROOM	20,80
8/105.6	LOŽNICE / BEDROOM	13,20
8/105.7	LOŽNICE / BEDROOM	13,20
8/105.8	KOUPELNA / BATHROOM	4,10
8/105.9	CHODBA / CORRIDOR	8,10
8/105.10	KOMORA / LAUNDRY	3,80
8/105.11	WC	1,30
8/105.12	WC	1,30
8/105.13	ŠATNA / WALKING CLOSET	2,50
8/105	CELKEM / TOTAL	141,12