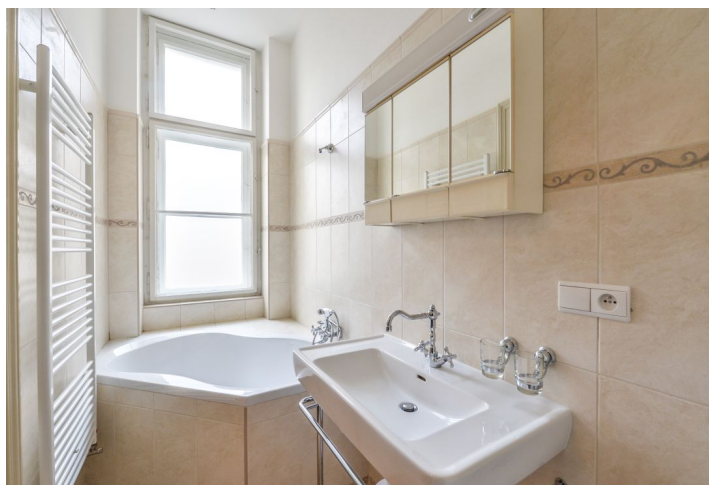




## Apartment One-bedroom (2+1)

Rented

86 m<sup>2</sup>, Prague 2, Vinohrady, Čelakovského sady





## Apartment One-bedroom (2+1)

Rented

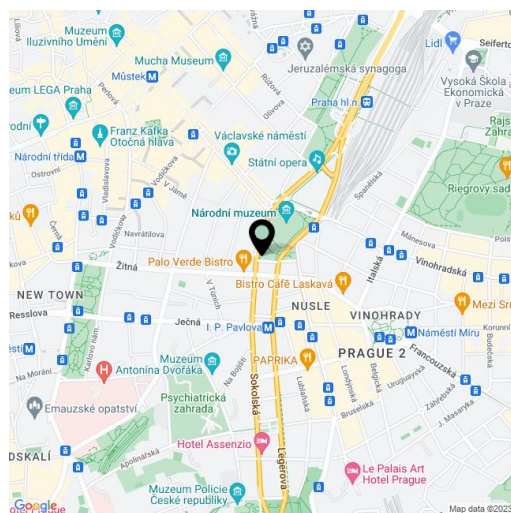
86 m<sup>2</sup>, Prague 2, Vinohrady, Čelakovského sady

Total area	95 m <sup>2</sup>
Floor area*	86 m <sup>2</sup>
Balcony	9 m <sup>2</sup>
Parking	-
Cellar	-
PENB	G
Reference number	9164
Available from	Immediately

Benefiting from a central location, this is a fully furnished reconstructed 1-bedroom 2-bathroom flat with 2 balconies on the second floor of a renovated historic building with lift. Located in a highly sought after residential neighborhood just steps from the National Museum, Wenceslas Square and the Muzeum metro station. Within easy reach of full amenities and walking distance of Riegrovy Sady Park.

The interior includes a spacious central entrance hall with built-in wardrobes, living room with a balcony facing the street, a large fully fitted eat-in kitchen, one bedroom with an en-suite bathroom (bath, sink, toilet), and second bathroom (walk-in shower, sink, toilet).

Preserved original details, **high ceilings with stucco** decorations, Swarovski chandeliers, **solid wood parquet floors**, carpets, soundproof windows, gas heating, security lock, two TVs, washer, dishwasher, microwave oven, satellite TV connection. Independent gas and electricity meters. Shared entrance with one flat. Deposit for common building charges and utilities CZK 3. 000/month. Interior 86 m<sup>2</sup>, two balconies (7 + 2 m<sup>2</sup>). Available from January 2020 at the latest.



\* Area of the unit according to the Civil Code. The area consists of the sum total area of the entire unit bounded by perimeter walls.